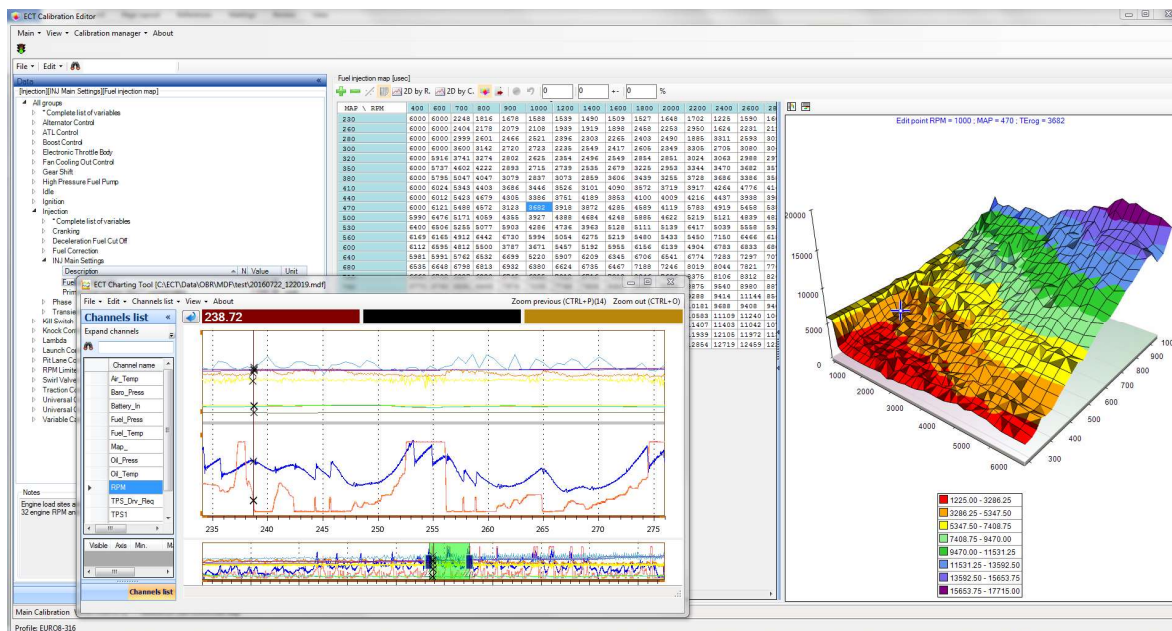


Quick guide to ECU Configuration Tool ECT

The smart tool for calibrating engine management systems
and data analysis of logged data



Control Systems

Version 2.3 NDM – June 2020

For use with ECT versions from version 4.12.609

Copyright © OBR Control Systems Inc 2016-2020. All rights reserved.

Table of Contents

1	Introduction	5
2	Software Requirements	5
3	Software Installation	6
3.1	USB Communication Drivers	6
3.2	EFI Communication Server	7
3.3	Pseudo Programmer – Programmer for EFI ECUs	7
3.4	ECT Main Tool.....	8
3.5	ECU Logger.....	9
4	Communication	10
5	Directory Structure	11
6	ECT Main Menu	12
7	Profiles Manager	14
7.1	Importing a New Profile.....	14
7.2	Assign Database to Display Files.....	14
7.3	Change ECU Display File	14
8	Displays.....	15
8.1	Data Display Options	16
8.2	Display Window Main Options	16
8.3	Display Management	17
8.3.1	New channel container	17
8.3.2	New link to channel container	17
8.3.3	New calibration element container	17
8.3.4	New link to calibration elements container	17
8.3.5	New container group.....	17
8.3.6	Import existing channel container	17
8.3.7	Import existing calibration element container	17
8.3.8	Import existing group	17
8.4	Create New Display	17
8.4.1	Add Text	18
8.4.2	Add Channel.....	18
8.4.3	Add LED	19
8.4.4	Add Potentiometer	20
8.4.5	Add Gauge	21
8.4.6	Add Button.....	22
8.4.7	Add Maps to Displays	22
8.5	Open or Edit a Display	23
8.5.1	Noise reduction.....	23
8.6	Display Options	24
8.6.1	Open display container	24
8.6.2	Arrange multiple display containers	24
8.6.3	Alarms	24
8.6.4	ECT display channel automated data logging	24
8.6.5	ECT display channel manual data logging	26
8.6.6	Print screen data PRT	27
8.6.7	Print screen data XLS.....	27
8.6.8	Potentiometer activation	27
8.6.9	Search parameters	28
8.6.10	Learn tool parameters.....	28
8.7	Multiple Display Sections	28
8.8	Strip Chart Mode.....	28
8.9	Display Override Functions	29
8.9.1	Creating override function.....	29
8.9.2	Working with override function	30

9	ASAP3 Communication	31
9.1	ASAP3 Options	31
9.1.1	Serial port communication	31
9.1.2	Ethernet communication	31
9.2	Establish ASAP3 Communication	32
9.3	Automated Test Procedures	32
10	Calibrations	33
10.1	Calibration Options	33
10.2	File Manager	34
10.3	Load a Calibration	34
10.4	Calibration Display	35
10.5	Reference Map	35
10.6	Map Editing	36
10.6.1	Change a Constant	36
10.6.2	Change a 1-dimensional table	36
10.6.3	Breakpoint editor in 1-dimensional tables	37
10.6.4	Change a 2-dimensional map	37
10.6.5	Breakpoint editor in 2-dimensional maps	38
10.6.6	Interpolation	39
10.6.7	Comparing maps	39
10.6.8	Clone settings	40
10.6.9	Copy and paste	40
10.7	XML Files	41
10.8	Print	41
11	Memory Interface	43
11.1	Memory Interface Options	43
11.2	ECU Comms	44
11.2.1	Send calibrations	44
11.2.2	Read calibrations	44
11.3	Learn	45
11.3.1	Send learn calibration	45
11.3.2	Read learn calibration	45
11.3.3	Learn functions	45
11.4	Diagnostic Tools	46
11.4.1	Reset diagnostic data	46
11.4.2	Reset counters	46
11.4.3	Output diagnose	46
11.5	MD5 Calibration Verification	46
11.5.1	Tool version	46
11.5.2	Configuration	47
11.5.3	Creating MD5 files	47
11.5.4	Verifying engine calibrations	47
11.5.5	Verifying ECU setup calibrations	48
12	Charting Tool	49
12.1	Charting Tool Options	49
12.2	File	50
12.2.1	Open main log file and load ALL channels into memory	50
12.2.2	Open main log file and choose which channels to load into memory	50
12.2.3	Open another log file for comparison and load ALL channels into memory	50
12.2.4	Open another log file for comparison and choose which channels to load	50
12.2.5	Offset value to be added to each of the compared file channels	50
12.2.6	Close file added for comparison	50
12.2.7	Print	51
12.2.8	Export	51
12.2.9	Exit	51

12.3	Edit	51
12.3.1	Channel Manager	51
12.3.2	Convert to constant sampling rate	51
12.3.3	Convert to maximum sampling rate	51
12.4	Cursor	51
12.4.1	Two Cursors	52
12.5	Channel List.....	53
12.6	Load a File.....	54
12.7	Create, Save and Load a Personalised Display Layout.....	55
12.8	Display Segments.....	57
12.9	Zoom In / Zoom Out.....	58
12.10	Display Orientation.....	58
12.11	Link analysis display with engine calibration.....	58
13	ECU Logger	60
13.1	Initial Setup.....	60
13.2	Communication.....	60
13.3	Configuring	60
13.4	Update Logger – Download Data	61
14	Workspace	62

1 Introduction

The ECT communication tool is developed to give the user full access to all features in any of our engine management systems for use in motorsport and automotive development environment. The tool gives access to:

- Display of engine data
- Off-line modifications of main and setup calibrations
- On-line modifications of main and setup calibrations
- Sending and receiving calibrations to the ECU
- Sending and receiving learn calibrations to the ECU
- Resetting the ECU's automatic learn system
- Configuration and downloading of the ECU data logger
- Data recording of all parameters shown on a data display
- Graphic analysis of the logged data
- Modification of the ECU databases
- ASAP3 communication and generation of A2L files

2 Software Requirements

- A PC running Windows 7, Windows 8 or Windows 10.
- ECT is developed with Microsoft ®. NET Framework 4.0 which must be present on the PC. If the Framework is not installed during the installation you will be asked to authorize the installation software to download and install the Framework. Alternatively, you can manually install the Framework from another source and then proceed with the installation of ECT.
- The PC must have at least 110 Mb free on the hard disk.
- The PC must have at least one available USB port and an Ethernet port.
- Our CAN communication interface is required for communication with all current devices or an Ethernet connection for Euro-5, Euro-8 and Euro-12.
- 4 additional programs are required to be installed:
 - ECT USB drivers
 - ECT Server
 - ECT Pseudo Programmer
- The databases provided by OBR Control Systems.
- The fundamental database to manage a device is the database in XML format. It contains the communication IDs and optionally the memory map, the list of channels to read, the structure of the calibration and other characteristics of the device.
- Display databases. These databases contain lists of channels or values of the calibration along with all necessary information to graphically render data. The database can be created from scratch in ECT or imported into the environment with wizards and can be modified using the tools provided by ECT.
- Firmware of the device. Developed by EFI and already present in the device. ECT gives you the ability to reprogram the ECU with a new version of firmware released by EFI (if the device includes the ability to be reprogrammed).
- Calibration of the device. Usually developed by the customer, on an initial basis provided by OBR. If the device allows it can be transmitted to the device and downloaded from the device through ECT. In most devices you can also view and edit the contents of the calibration on-line.

3 Software Installation

To install the ECT tool download the software from our website www.obrcontrolsystems.com, look for the 'Download' section.

Download these driver packages:

- ECT USB interface drivers
- ECT server
- Pseudo Programmer
- ECT engine management tool '592' or newer
- ECU data logger setup

3.1 USB Communication Drivers

The Windows driver required for the functioning of the communication interfaces EFI. The installation of this software is essential for all functions involving communication with ECT devices.

Click on **Next** to start the installation.



Accept the license terms and click **Next**.



Select the USB option and then click **Install**.



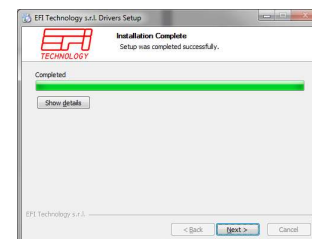
Click **Next**.



Click **Finish** to complete the installation of the device drivers.



Click **Next** to finish the driver installation.



3.2 EFI Communication Server.

This software interfaces with the driver and provides the communication conditions to other programs such as ECT. Installation of this software is essential for all functions involving communication with devices.

Click **I Agree** to start the installation of the communication server.

Accept the default installation path or change it now, then click **Next**.

Select **Automatic Run** if you want to start the server with Windows or leave blank for the service to start when the tool is opened.

Click **Install** to proceed.

Click **Next** to continue.

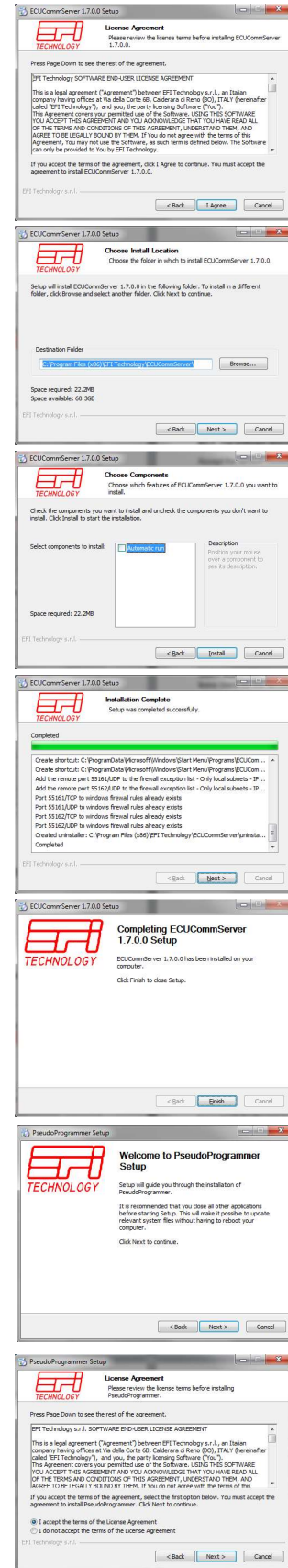
Click **Finish** to close the setup.

3.3 Pseudo Programmer – Programmer for EFI ECUs

This software is used for programming devices with a kernel of the latest generation. It can operate in stand-alone mode or be invoked as a tool by ECT. The installation of this software is essential if you intend to use ECT for programming devices based on the latest kernel.

Click Next to start the installation.

Accept the license terms and click **Next**.



Click **Next** to start the installation.

In normal installations you do not need to add neither desktop nor a quick launch shortcut. Just tick the last box to associate certain file extensions with Pseudo Programmer.

Click **Next** to proceed.

Click **Next** to finish the installation.

Click **Finish** to close the setup.

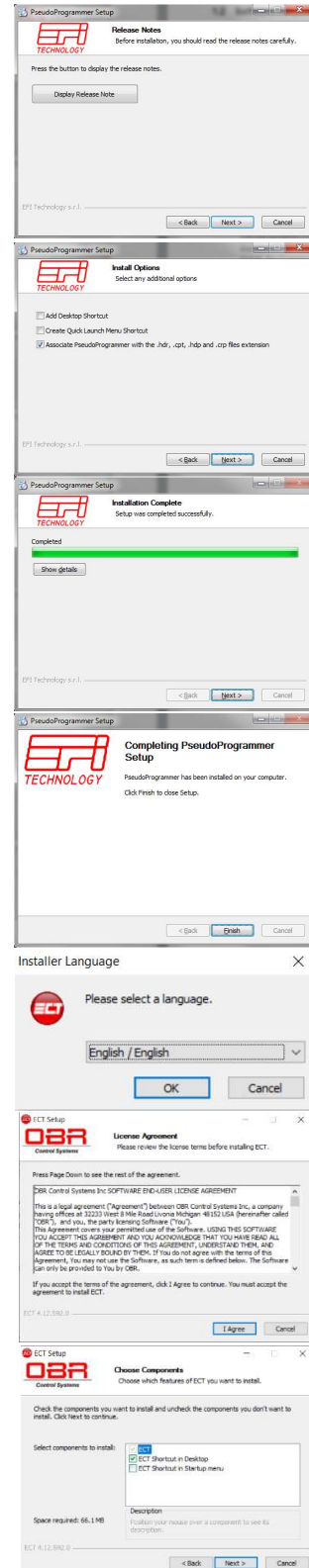
3.4 ECT Main Tool

This software is ECU tool which is described in this documentation. This guide supports of ECT version 592.

Click OK to proceed with the installation.

Click **I Agree** to proceed with the installation.

Select where to add shortcuts and click **Next** to start the installation.



Accept the default installation path or change it now, then click **Next**.

When the installation is complete a tool version history is displayed. Close it and then click **Close**.

3.5 ECU Logger

This is the software used for configuring the on-board data recording module available in most of our engine management modules. The software is also used for downloading logged data.

Data saved in the MDF format can be visualised and analysed graphically using the Charting Tool.

Click OK to proceed with the installation.

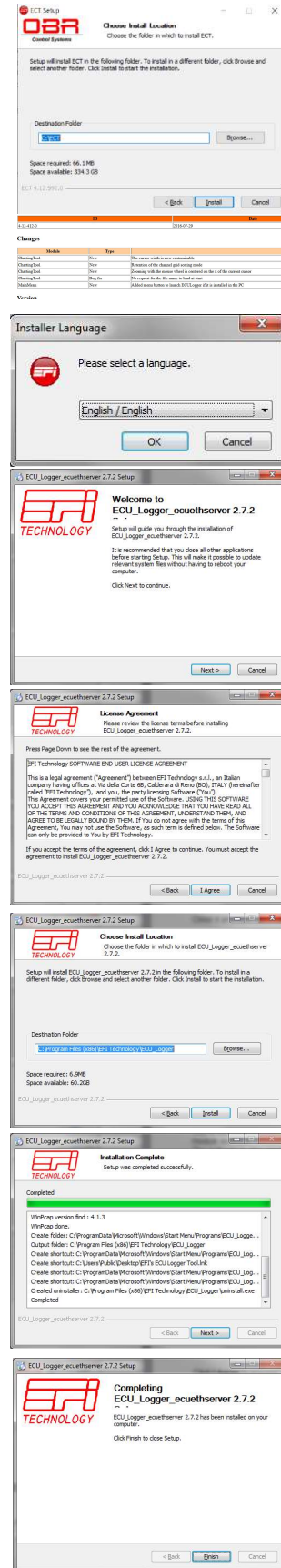
Click Next to proceed with the installation.

Click I Agree to proceed with the installation.

Accept the default installation path or change it now, then click Install.

Click Next to finish the installation.

Click Finish to close the setup.




4 Communication

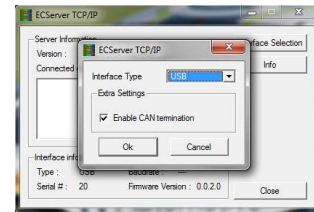
Communication with the ECU is either via CAN using a dedicated our USB CAN interface, part number EFP02C, the CAN logger EFT20B or via Ethernet (some ECUs only).

Ethernet communication is available with Euro-5, Euro-8 and Euro-12 ECU's. Communication via Ethernet is generally faster than CAN communication, but the CAN interface is recommended in noisy conditions and is required to update the ECU firmware. When communicating via CAN, the PC must be connected using the EFP02C or EFT20 interface to the ECUs CAN1.

Please note that CAN1 is terminated internally in the ECU, the EFP02C or EFT20 interfaces should be terminated via software.

The server  icon is found on the PC screen, in the lower right-hand corner. Right click it and select **Show**:
Tick the box **Enable CAN Termination** and click **OK**.

With this tool an optional ASAP3 communication is available. ASAP3 communication allows data exchange between an engine dyno and the ECU. Please see section 10.



5 Directory Structure

Several folders are created in the ECT main folder during the installation process:

BIN

Contain program folders and associated files, for example a data base editor.

CALIBRATIONS

Suggested folder for your firmware, engine and ECU setup maps.

Installing an updated version, a new folder is created, containing the related firmware.

COMMON

Contains the main program data files.

DEVICE

Individual database files for each type of ECUs and for various versions of firmware releases.

DOC

System version history files are stored in this folder.

LANG

Various system files.

TEMPLATES

Various system files.

TOOLS

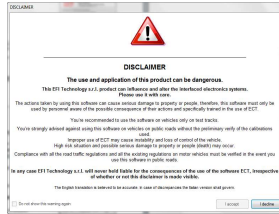
Various system files.

USER

This folder contains variations of display files for supported ECUs.

6 ECT Main Menu

First time you start ECT after an installation or updated version has been installed this screen appears:



Scroll down, tick the box **Do not show this warning again** and click **I Accept**.

The ECT Main Menu now appears as a slim tool bar across your monitor:



- **Device editor**, this section gives access to the databases for each individual ECU version installed in the tool. To access data of a physical device, ECT must have a database file [devicename].XML corresponding to the physical device. From this database ECT reads the information required to visualize data, to program firmware, manage engine maps etc.
- **Profile manager**, a profile is a custom environment that allows you to save collections of displays together with a set of data stored in a database file [profilename].PDB. The profile manager provides commands to create, delete, copy, import and export profiles.
- **Displays**, you can create screens displaying any ECU parameter measured and calculated for each type of ECU. A screen can display any number of ECU channels in any size, font and color in a numerical window or as an analog gauge. You can add LED's in various colors to ease the data monitoring and potentiometers for easy, adjustments of numerous parameters. Furthermore, you can add access to any section of the ECU maps, allowing you to edit for example the main fuel and spark maps directly within a display window. The display screen is also used to configure your AMC, Active Mapping Controller. The display tool provides commands to create, modify, organize and load data display screens. It also features an option to record live data from any display screen.
- **Calibration editor**, the calibration editor opens the map editor and gives access to the data in both the engine maps and the ECU setup calibrations. Both types of calibrations can be accessed working either online with the ECU or offline.
- **Memory interface**, memory interface provides access to commands to flash the device with a new firmware, to read and write the calibrations, to manage diagnostic functions (if available for the current device) and to manage the creation of HDP and CRP files.
- **Charting tool**, this is a tool used for graphical display of data recorded by the built-in data logger available in most of our ECUs and by the data recording option in the Display section. It can also open MDF files from other systems.
- **ECU Logger**. If you have installed the ECU logger configuration tool you can access it from this section. Here you can create logger configuration files, set sampling rates and trigger conditions. Data is also downloaded from the ECU to your PC in this section.

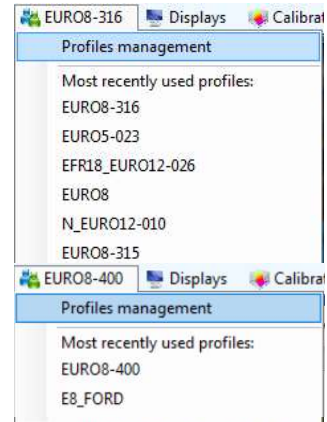
- **Arrangement**, click this option to line open windows in ECT up next to each other. If you have two groups open, this feature will split the monitor display area into two, divided vertically and showing each group in each segment.

Workspace, when you have created your preferred layout of the tool, combining for example displays and the calibration editor, you can save your current layout as a workspace. This way you can load your preferred layout with a few clicks with your mouse.

- **Settings**,

7 Profiles Manager

Use this section to switch between various ECU communication protocols. From the drop-down menu you click on the preferred version and this sets the display screen protocol for the selected ECU. This section also gives access to create a new profile, to copy profiles, to import and export profiles, rename and delete profiles.



7.1 Importing a New Profile

We release new versions of ECU data files as **XIP** files. This is the format used by ECT to import new ECU data files.

Download the XIP installation file you have received from OBR. Open ECT and click on the **'Profile Manager'** icon and select **'Profiles management'**.

Click on **'Import Profile'** and locate the new XIP file, click **OK** to open it.

A new display opens, showing all the files included in the new release.

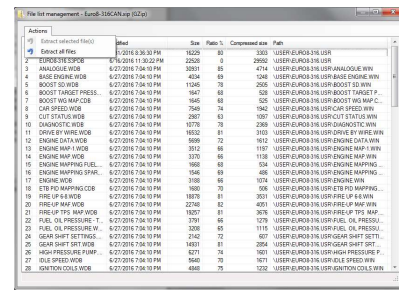
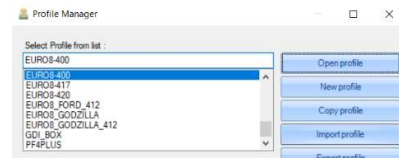
Click on **'Actions'** in the top left corner of this window and select **'Extract All'**. Close the window when done.

If you only want to import part of the files, click on those files, and then select **'Extract selected file(s)'**.

The new database will be saved in a new folder in the main Device folder, new display files will be saved in a new folder in the main User folder.

Firmware and sample maps will be saved in a new folder in the main folder Calibrations.

Once installed you select the new version now appearing in the version list and click **Open Profile**. By default, the XIP files we supply includes sample maps the ECU firmware corresponding to the release number. These files will be copied into the 'Calibration' folder found in the main ECT folder when installing the data files.



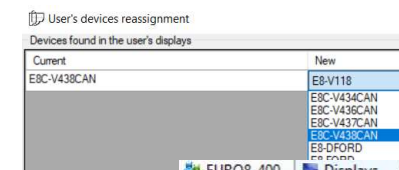
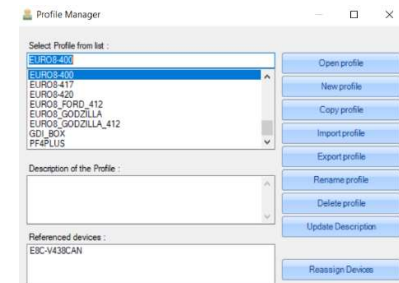
7.2 Assign Database to Display Files

You use this section to link a specific database version to data display screens.

As shown on the right the data display files are linked to a database communicating via CAN.

If the data base does not correspond to the version of firmware used in the ECU, click first on the display version in **Select Profile from List**, then click on **Reassign Devices**.

A drop-down menu opens, showing a list of available databases. Click on the correct database to select it, then click **OK** to link it to the display version.

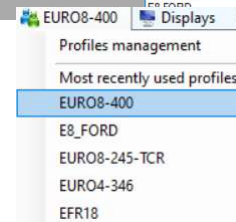


7.3 Change ECU Display File

When you switch from one type of ECU to another model, you must change the database used for the communication and data display.

Click on the Profile Manager icon to open a list of available profiles.

Click on the profile you want to use and ECT is now configured to communicate with a different ECU.

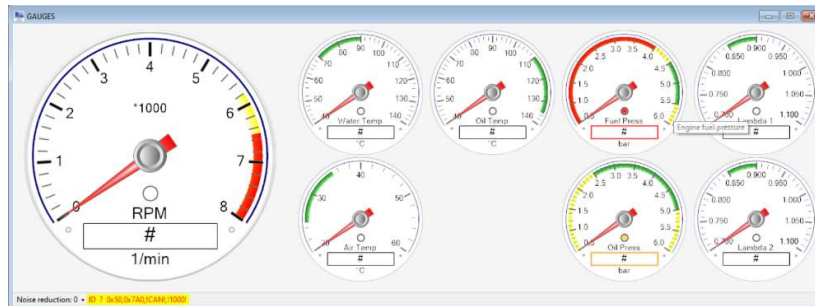


8 Displays

This section gives access to visualize live data from the ECU on your PC. It is possible to create display screens with:

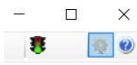
- Digital and analog data windows
- Text messages
- Actuation switches
- Potentiometers
- Strip charts
- ECU tables and maps
- Data recording
- Alarm configuration

Here you see an example, combining all features of the display program.



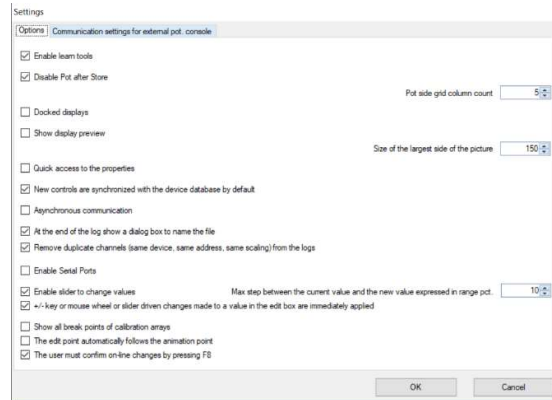
8.1 Data Display Options

First time you have installed the ECT tool you should check the settings of the display program. Open the display program, click on settings icon (gear symbol) in the upper right-hand corner of the display window.



Selectable options are:

- **Enable learn tools** – tick box to enable learn tools on display windows. See 9.6.10.
- **Disable pot after store** – recommended, see 9.4.4.
- **Pot side grid column size** - 5 is suggested.
- **Docked display** - list channel data in a table format. Not recommended.
- **Show display preview** - select to show thumb view when scrolling through display list.
- **Size of the largest side** - set to preferred size of thumb view.
- **Quick access to the properties** - select to show channel data properties when double clicking on a display channel window. Otherwise you must enable display window editor first.
- **New controls are synchronised with the device database by default** - recommended.
- **Asynchronous communication** - not recommended for our engine management systems.
- **At the end of log file** - option to name the data logging file individually. Alternatively, the file is named by data and time stamp. Please see section 9.6.4.
- **Enable serial ports** - select to connect an AMC via a USB RS232 adapter.
- **Enable slider to change values** - this is a recommended setting for use with override data windows. See section 9.9.
- **Mouse or slider driven changes to a value in the box are applied immediately** – this is a recommended setting for use with override data windows. See section 9.9.
- **Show all break points in calibrations** - if ticked all hidden map break points will be shown in maps. Not recommended.
- **The edit point automatically follows the animation point** - the edit cursor follows the animation in calibration maps.
- **The user must confirm on-line changes by pressing F8** - tick box to update map on-line map changes only once F8 is pressed. Recommended setting.



If you use an AMC connected to your PC via a USB serial port adaptor you must enable serial ports. The AMC is a mapping controller which can be configured to control up to 6 of the available software potentiometers found in the tool.



We supply the software with several different sample display layouts, but you can easily create your own displays or modify any of our sample layouts to suit your requirements.

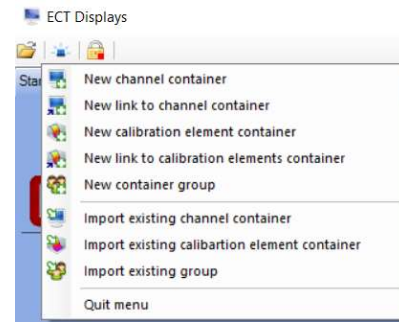
8.2 Display Window Main Options

When you open the display manager from the main ECT menu you have the following options:

- Open data display listing (ALT+D)
- Arrange windows
- Alarm settings and messages
- Activation of software or AMC hardware potentiometers by pressing F4.
- Search function

8.3 Display Management

Right click the folder icon for open display listing to show initial options for the display management



8.3.1 New channel container

Click to create a new display window.

Refer to section 9.4 to see how to create a new display window.

8.3.2 New link to channel container

Creates a link to a data window stored in a different folder than the default. If you import from a different type of ECU, you must link the data parameters to the current ECU database.

8.3.3 New calibration element container

Use this section to add ECU maps for online access to ECU maps. Refer to section 9.4.7 for full details.

8.3.4 New link to calibration elements container

Creates a link to ECU data window not located in the current folder. If you import from a different type of ECU, you must link the data parameters to the current ECU database.

8.3.5 New container group

Create a new group of displays.

If you click to open a group display, all displays contained in the group will open.

8.3.6 Import existing channel container

Import a data window stored in a different folder into the current folder. If you import from a different type of ECU, you must link the data parameters to the current ECU database.

8.3.7 Import existing calibration element container

Import a data window stored in a different folder into the current folder. If you import from a different type of ECU, you must link the data parameters to the current ECU database.

8.3.8 Import existing group

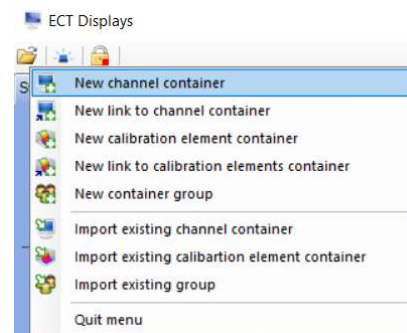
Import a data group window stored in a different folder into the current folder. If you import from a different type of ECU, you must link the data parameters to the current ECU database.

8.4 Create New Display

To create a new layout right click the Data Displays tab and select **New channel container**. You will be prompted for a name, then click on **OK**.

Right clicking on the display, you can now add the following:

- Text
- Data channels
- LED warning lights
- Potentiometers
- Gauges
- Memory addresses (special applications only)



8.4.1 Add Text

The command allows you to add a text to a display screen.

You can edit a display if you see a grid on the gray background. To enable the edit mode, you double click on the gray background or you right click and select **Enable Edit Mode**.

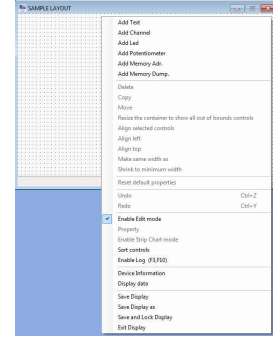
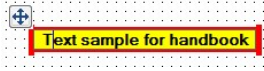
When the grid is visible you add text by right clicking and select **Add Text**.

Write the text in the window which opens.

Click on Look to change the font and color.

When done, the text window will appear on your screen.

You can move the window to any position on your display by clicking the cross at the upper left-hand window, move your cursor to the desired position and then click again.



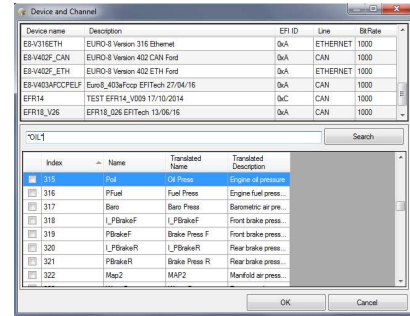
8.4.2 Add Channel

The command creates a window which will numerically display the value of any of the ECUs data channels.

You can edit a display window if you see a grid on the gray background. To enable the edit mode, you double click on the gray background or you right click and select **Enable Edit Mode**.

When the grid is visible you add a window by right clicking and select **Add Channel**.

Check that you have selected the right database.

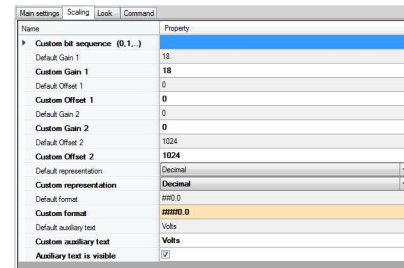


Now look for the channel. You can scroll through the channel list if you know the index number of the channel or you can search for it.

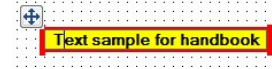
Use the * to search any combination where your wording exists. For example, if you are looking for oil temperature and oil pressure you could type *OIL* and then press Enter. The search will jump to the first channel which includes the words OIL. If this is one of the channels you want, you tick the box. To continue your search, click the word in the search line again and press Enter. Once you have ticked all the channels you have searched for you click **OK**. The search window closes, and you return to the main display window, now showing your channels.

You can change the appearance of any display window. Double click on the window and the property window opens. Click on **Scaling** if you want to change the channel scaling, to toggle between decimal / signed / hex / binary presentations or change the unit.

Click on **Look** if you want to change font, color and text orientation.

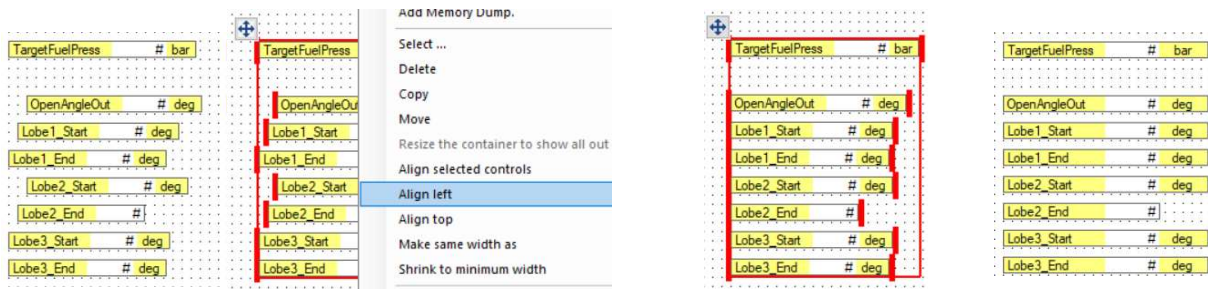


You can move the window to any position on your display by click the cross at the upper left-hand window, move your cursor to the desired position and then click again.



8.4.2.1 Align Windows

You can resize and realign the controls on the display screen.



Right-click the display container and enable the **Edit Mode**.

Hold the left mouse button and draw a box around the group of windows to realign.

Now right click and select **Align Left** and click the window you want the windows to line up with.

To arrange for all windows to have the same width, aligning the data. Once aligned to the left, right click the frame again and select **Make same width as**.

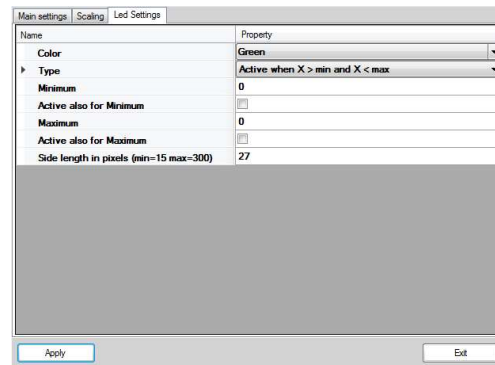
Click on the

8.4.3 Add LED

The command creates a LED which can change status depending on the value of a channel.

This type of control is linked to a database device and it can be associated with any ECU channel.

The color of the LED image is bright if the activation conditions are true and dark if the conditions are false. When the display is in online, the value is updated continuously to a variable frequency which depends on the number of variables sampled, the bit rate, the speed of response of the control unit and the time of processing data received.



You can add a LED if you see a grid on the gray background. To enable the edit mode, you double click on the gray background or you right click and select **Enable Edit Mode**.

When the grid is visible you add a LED by right clicking and select **Add LED**.

Check that you have selected the right database.

Now look for the channel. You can scroll through the channel list if you know the index number of the channel or you can search for it.

Use the * to search any combination where your wording exists. For example, if you are looking for oil temperature and oil pressure you could type ***OIL*** and then press Enter. The search will jump to the first channel which includes the words OIL. If this is one of the channels you want, you tick the box. To continue your search, click the word in the search line again and press Enter.

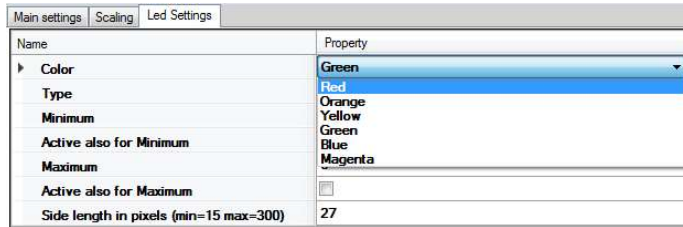
Once you have ticked all the channels you have searched for you click **OK**. The search window closes, and you return to the main display window, now showing your new LEDs.

To calibrate the LED, double-click on it and the property window opens. As with other channels added you can in general change the scaling and name.

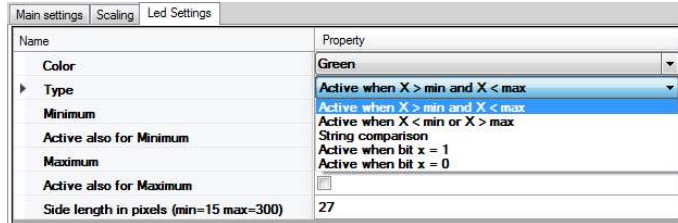
Click on **Led Settings** to configure the control.

You can select several between several colors for the LED:

- Red
- Orange
- Yellow
- Green
- Blue
- Magenta



You can select the switching conditions for the LED.

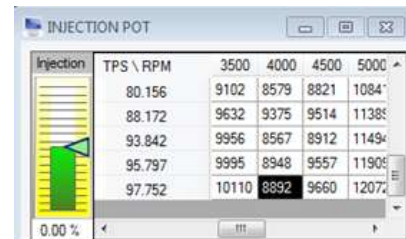


- **String comparison.** The LED is active if the string resulting from the conversion to a string of the bytes read from the control unit, is equal to the specified word in the 'string' field.
- **Active if bit x = 1** The LED is on when the value of the bit at position 'Meaningful bit' of the variable read from the control unit is equal to 1.
- **Active if bit x = 0** The LED is on when the value of the bit at position 'Meaningful bit' of the variable read from the control unit is equal to 0.

Use the command **Apply** to commit the changes.
Click **Exit**, press ESC or close the property page to cancel changes.

8.4.4 Add Potentiometer

This command will add a potentiometer to a display screen. It can be associated with many ECU channels and can provide a real time global trim while running the engine. The potentiometer can be linked directly to the engine map and can store any trims into the map. It can be operated externally by our AMC, the Active Mapping Controller, as well as in software.



You can edit a display if you see a grid on the gray background. To enable the edit mode, you double click on the gray background or you right click and select **Enable Edit Mode**. When the grid is visible you add a potentiometer by right clicking and select **Add Potentiometer**. Check that you have selected the right database.

Now look for the channel. You can scroll through the channel list if you know the index number of the channel or you can search for it. Use the * to search any combination where your wording exists. For example, if you are looking for a potentiometer to control the ECU spark advance you could type ***SPARK*** and then press Enter. The search will jump to the first channel which includes the words SPARK. If this is one of the channels you want, you tick the box. To continue your search, click the word in the search line again and press Enter. Once you have ticked all the channels you have searched for you click **OK**. The search window closes, and you return to the main display window, now showing your new potentiometers.

You can change the appearance of the potentiometer.

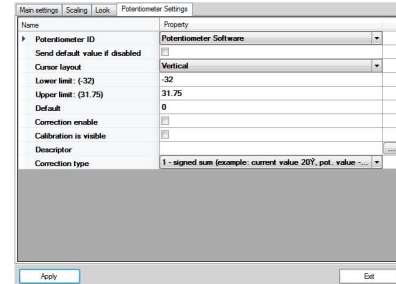
Double click on the window and the property window opens.

Click on **Scaling** if you want to change the channel scaling, to toggle between decimal / signed / hex / binary presentations or change the unit.

Click on **Look** if you want to change font, color and text orientation.

Click on **Potentiometer Settings** to configure the potentiometer.

- **Potentiometer ID**, you can assign the potentiometer to any of the 6 dials on the AMC or to work as a software potentiometer.
- **Default value**, tick the box to send a default value when the potentiometer is disabled.
- **Cursor layout**, select between vertical or horizontally.
- **Limits**, these values are defined within the ECU device.
- **Default**, key in the default value to use when disabled.
- **Correction enabled**, tick the box if you want the potentiometer to store changes into the ECU. Corrections will be made to map #1 if you press the red button on the AMC or if you press **F2**.
- **Calibration is visible**, this will show part of the ECU map for the selected function.
- **Descriptor**, select the preferred descriptor from the ECU device.
- **Correction type**, this will show you which type of correction of the base map is performed. This is defined within the ECU device.



To activate and deactivate the potentiometers on open display screens, press **F4**. To change the potentiometer value, first press the **F4** key or click on the padlock icon on top of the display container. Click on the potentiometer you want to use and you can move the slider up and down by pressing the **PgUp** and **PgDn** keys, the **+** and **-** keys, use the mouse wheel or use the mouse to drag the slider up and down. Any changes by the potentiometer can be saved into the map it represents by pressing the **F2** key. In **Settings** you can activate an option which disables the potentiometers once you have pressed **F2** to store a setting.

8.4.5 Add Gauge

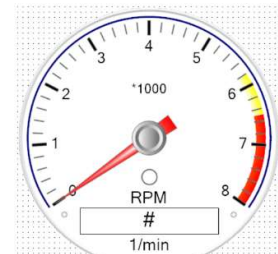
Data channels can be visualized as analog gauges as well. If you want to add a gauge to a display container, first select the **Enable Edit Mode**, then right-click and select **Add Gauge**.

Look through the data base for the channel you want to display as a gauge, for example engine RPM.

Once added, then double-click on it to open its properties, select the Gauge tab.

You have these options defining the gauge:

- **Side length**
Gauges are square, this defines height and width. Gauge size can also be set using the **'Make same width as'** command found when right-clicking the gauge in display edit mode.
- **Red alert ranges**
Red warning range, start and stop are separated by semicolon, the sample gauge is set as 6500;8000
- **Yellow alert range**
Yellow warning range, start and stop are separated by semicolon, the sample gauge is set as 5800;6500
- **OK range**
If used it will define a green range, otherwise this will be left as base white color.



Name	Property
Side length in pixels (min=130 max=500)	400
Red alert ranges (E.g. 0;189;10)	6500;8000
Yellow alert ranges (E.g. 1;288;9)	5800;6500
Ok ranges (E.g. 2;8)	
Divider (0=automatic)	1000
Default minimum value	0
Custom minimum value	0
Default maximum value	65535
Custom maximum value	8000
Major tick mark interval spacing (0=automatic)	1000
The time it takes for the pointer to travel the entire scale, measured in seconds [0,1]	0

- Divider**
 If you want the increment on the gauge to be shown in a different format than the base value you must use a divider. To show RPM on the gauge as kilo RPM you must divide by 1000.
- Custom minimum value**
 Set the minimum value to be displayed on the gauge, in this case the value is chosen as 0.
- Custom maximum value**
 Set the maximum value to be displayed on the gauge, in this case the value is chosen as 8000.
- Major tick mark interval spacing**
 Set the steps between scale markings, in the sample this is set to 1000. If set to 0, a default spacing will be selected.
- Time it takes for the pointer to travel scale**
 Set time for the pointer to move from the minimum to maximum position in seconds.

8.4.6 Add Button

Some data channels display status flags for given functions. When adding such windows to a display screen there is an option to add a button, allowing direct access to the function, overriding the need to jump between a display and the calibration tool.



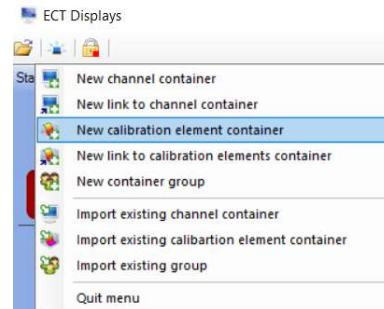
This function requires an optional programming of the EFP02 and EFT20 CAN interfaces.

Main settings Scaling Look Command		Property
Name	Command enable	<input checked="" type="checkbox"/>
ON value		1
OFF value		0
Image type		Button
Shortcut key (1..9)		-
Side length in pixels (min=15 max=300)		40

8.4.7 Add Maps to Displays

This section described how you can load an online access to any maps in the ECU.

You can add any map from the ECU to a display window. To create a new layout right click the **Data Displays** tab and select **New calibration element container**. You will be prompted for a name, then click on **OK**.



Select the type of ECU data you want to add, for example a calibration map.

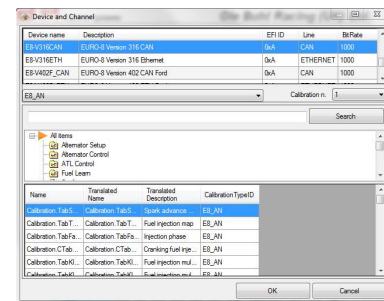
A window called **Device and Channel** now opens.

Select the ECU database.

Select the preferred expression of the ECU engine load.

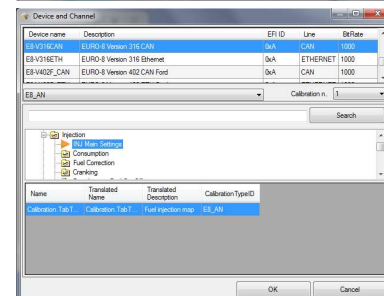
You can select the engine load (the Y-axis in the map) expressed as the throttle angle (AN, alfa-N), as manifold air pressure (MAP, speed density) or as mass air flow (MAF).

Next scroll through the ECU tree to find the map you are looking for.



In the example the **INJ Main Settings** has been selected and the base fuel map is shown as an option in the lower part of the window.

Click **OK** to select it.



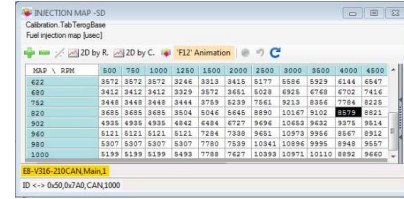
The fuel map now opens, and you have full access to the injection pulse widths on a display page.

You can add any map from the ECU to a display page.

Once created a real-time table or map are marked with a red icon next to its name while a display screen is marked with a blue icon.

Any changes to a table or map will be written momentarily into the ECU, updating the engine settings in real time.

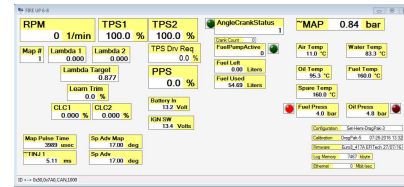
If you manually want to control the ECU update by pressing F8, check the settings for F8 in 'Main Settings'.



8.5 Open or Edit a Display

Click on the folder icon to open a display, then you click the right-hand mouse button to access:

- **Add text, channels, LED, potentiometers, gauges etc**
Please refer to sections 9.4.1 to 9.4.7.
- **Enable Edit mode**
Use this to open to open the display editor where displays can be created and modified.
- **Property**
- **Sampling interval list**
Display refresh rates for all channels present in the open display.
- **Enable Strip Chart mode**
Displays with up to 12 channels can be displayed graphically. See section 9.8.
- **Sort controls**
Sort channels for recording mode.
- **Enable Log**
See section 9.6.4 and 9.6.5 to learn about using the ECT data recording feature.
- **Device Information**
Displays information about maps and firmware loaded into the ECU.
- **Display Data**
Shows base information about current display.
- **Save display**
Save changes made to display.
- **Save display as**
Save display to a new file name.
- **Save and lock display**
Save display as a locked file, can be viewed by user without the database.
- **Exit**



Variable	Interval (s)
TPS1	0.10
MAP	0.35
Air Temp	0.35
Oil Temp	MAXIMUM SPEED

You can load any of the many sample display windows we provide with the software. Simply click on **Data Displays** and scroll down to view all available displays, all marked with a blue icon on the left. Click on the one you want to load.

You can load multiple display screens if you want.

Displays marked with a red icon are online maps with ECU data.

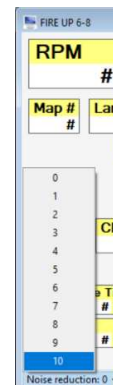
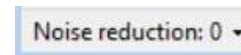
8.5.1 Noise reduction

ECT has a high refresh rate of data read from the ECU.

To dampen oscillations of the data display, a noise filter is added and is located at the lower left-hand corner for the container.

Click on the arrow to open the filter menu and then select the appropriate filter.

Noise reduction 0 does not filter the signal while 10 is the highest noise filter available.



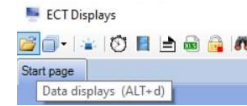
8.6 Display Options

When a display window is open and active with the ECU there are several selectable options in the upper left-hand corner of the display container:



8.6.1 Open display container

Click the icon to open the list of available display containers. Click a name on the list to open it.



8.6.2 Arrange multiple display containers

Click the icon to select between arranging the multiple open containers as cascade, tile horizontally or tile vertically.



8.6.3 Alarms

You can create a condition for an alarm related to data included in the open display containers.

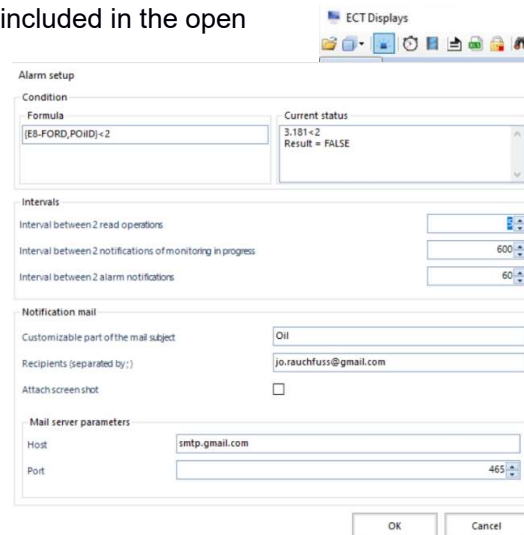
In this example the alarm is set to monitor the oil pressure. If the pressure drops below 2.0 bar the alarm is active.

It is possible to create additional conditions. The can include other monitored channels but also a conditioning channel, for example engine RPM below or above a given threshold.

The system checks the oil pressure every 5 seconds, Etc etc

When the conditions are true ECT will send an email message to the recipient listed.

You can attach a screen shot of the display showing the channel data.



8.6.4 ECT display channel automated data logging

The ECT tool has a built-in data logging capability.

Data will be stored on your PC's hard disk.

The logger will record data from all open windows in a display tab.

Recorded data can be visualised using the Charting Tool, also found in the ECT main tool.

Open a display window and right click on it and select **Enable Log**.

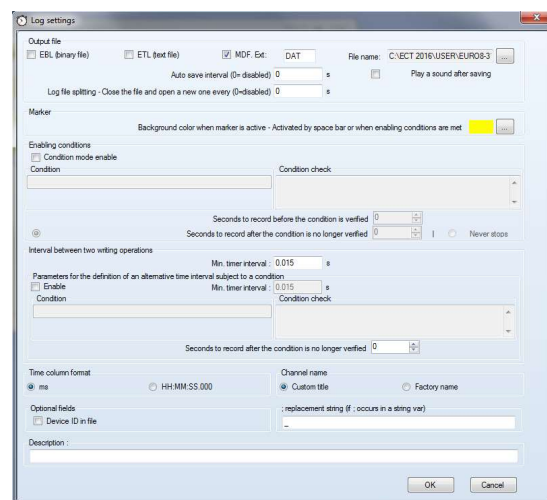
The window heading now changes to this layout:



Press the F3 key or click on the F3 Log icon to access the logger configuration.

Data can be stored in 3 different formats:

- **EBL**, a binary format.
- **ETL**, a csv or text format.
- **MDF**, data format, recommended.



In **File name** you can specify where to save the logged data file to. Refer to section 9.1 for advice on defining log file names.

While recording data, the log file can be saved in fixed time intervals, keyed in as **Auto Save Interval**. Every time interval chosen the recorded data will be saved to file if the logger is active, overwriting the previous saved file.

If you set this time interval to 0 the data file will be created when the data logging stops.

By using the **Log file Split** option ECT can save the logged data into a new file every selected time interval.

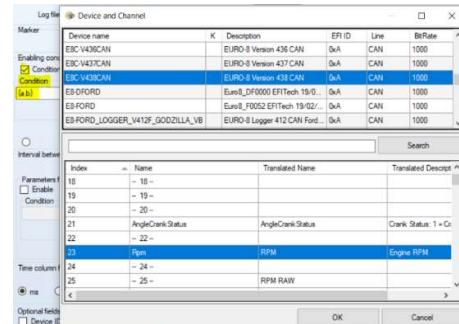
While recording data you can mark part of the recorded data by pressing the space bar to start marking. Press the space bar again to stop marking the data. When the space bar is pressed you can define a color change of the display data as an indication of the marker being active. When you review the logged data in the Charting Tool the status of the marker is shown as a semi-transparent band.

You can start data logging manually by opening the logger configuration, selecting the file format and then just by clicking **OK**.

You can also set conditions for the logging to start automatically. In section '**Enabling conditions**' tick the box '**Condition mode enable**'.

To define a conditioning channel, you must specify the database used. In the window **Conditions** start by typing the '{' character. The system does by default pick the database set for the display container and you will see, for example { **E8C-V438CAN** , [Channel] }.

Double click on [Channel] to open the database. You can search for the channel you are looking for, for example **RPM**. Once selected, some database versions show the channel name, some show the index number, the channel's position in the database.



If you want the data logging to start automatically when the engine RPM exceeds 3,000 RPM then change the string to { **E8C-V438CAN** , **RPM** } > 3000.

Operators and symbols allowed are + - * / AND OR NOT > >= < <= = ()

Complex conditions are allowed, for example ({Device1,RPM}> 3000) AND ({Device2,Vbatt}> 14)

To change the selection of a channel you can double-click between the braces.

This way you retrieve the list of available devices and corresponding channels.

The selection you make will be included in the condition you are building.

Therefore, to insert a new variable in a condition, you can write the device name and channel name directly in the box, separated by a comma, or enter a placeholder variable as {d, c}, and then double-click inside the braces to retrieve the list of devices and channels.

If you are online with the ECU, you can check the status of the condition shown in the box **Condition check**.

The parameter **Seconds to record before the condition is verified** gives you the ability to save data to file even before the condition of saving acquisition data was verified. This means that you can save data for example 10 seconds before your logging condition is true.

Similarly, the parameter **Seconds to record after the condition is no longer verified** gives you the ability to save to file data recorded after the condition of saving data is no longer true. Alternatively, you can select the option **Never stops** to avoid deactivating the saving of acquisition data once it begins.

In any case, logging data and data saving will end when the operator presses the 'F3' key or exit ECT.

In section **Interval between two writing operations** you can set the minimum time for sampling data. The more channels you want to log they longer time it takes between writing to file. The minimum time between writing is 15 ms, which is 66 Hz. Typically, logging for example 32 channels the sampling rate will be around 32 Hz.

In section '**Parameters for definition of an alternative...**' you can set a different recording rate if a change in the engine data is detected. For example, if you are planning a durability engine test you want to record data at a low sampling rate. If a predefined condition appears the system will switch to a higher sampling rate recording data at a higher resolution. Tick the **Enable** box to activate this feature and define the condition which triggers the activation. You must define database and channel(s) as described for the logging activation as well as the time to record at this sampling rate after the engine condition has returned to normal.

In **Time column format** you set the logger time stamps to be in either milliseconds or in hours, minutes and seconds format.


In section '**Channel name**' you can define how the logged channel name is shown in the log file:

- Tick the box '**Device name as prefix**' if you want the database name to be shown in front of the logged data channel name.
- Tick the box '**Custom title**' to use normal name for logged channels, recommended selection.
- Tick the box '**Factory name**' to use the internal software name instead of the normal channel name for logged channels. This setting is not recommended.

The section '**Optional field**' gives you the following options:

- **Device ID in file** gives you the option to add the ID of the database in the logged file's header. Normally this option is left unticked
- **; replacement string** gives you the option to use a different separator between data channels than semi-colon (;). For this reason, each occurrence of the character ; in the string is replaced by the character specified in this box.

Click on **OK** to start logging.

Logger. Seconds: 42, Log rows: 2643, Logged displays: 1, Current interval = 15 

The status bar at the lower left of the display container shows the current logger status.

The data logging will stop if the activation condition changes from true to false, you close the display container, or you press the **F3** key.

8.6.5 ECT display channel manual data logging

The ECT tool has a built-in and manually operated data logging capability.

Data will be stored on your PC's hard disk.

The logger will record data from all open windows in a display tab.

Recorded data can be visualised using the charting tool, also found in the ECT main tool.



Open a display window and right click on it and select '**Enable Log**'.

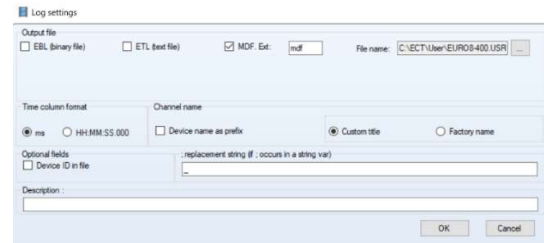
The window heading now changes to this layout:



Click on the **'Manual Log'** icon to access the logger configuration.

Data can be stored in 3 different formats:

- **EBL**, a binary format.
- **ETL**, a csv or text format.
- **MDF**, data format, recommended.



In **'Time column format'** you set the logger time stamps to be in either milliseconds or in hour, minutes and seconds format.

In section **'Channel name'** you can define how the logged channel name is shown in the log file:

- Tick the box **'Device name as prefix'** if you want the database name to be shown in front of the logged data channel name.
- Tick the box **'Custom title'** to use normal name for logged channels, recommended selection.
- Tick the box **'Factory name'** to use the internal software name instead of the normal channel name for logged channels. This setting is not recommended.

The section **'Optional field'** gives you the following options:

- **Device ID in file** gives you the option to add the ID of the database in the logged file's header. Normally this option is left unticked
- **; replacement string** gives you the option to use a different separator between data channels than semi-colon (;). For this reason, each occurrence of the character ; in the string is replaced by the character specified in this box.

Click on **OK** to start logging.

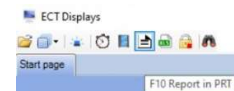


The status bar at the lower left of the display container shows the current logger status.

The data logging will stop if you close the display container or you click on the Manual Log icon.

8.6.6 Print screen data PRT

Use this option to create a data snapshot in PRT format.



8.6.7 Print screen data XLS

Use this option to create a data snapshot in XLS format, for example to include ECU data in a spreadsheet.



Create a spreadsheet template, an example is shown to the right. In column A you type the names of the engine parameters required for your report. You want to import data directly from the ECU into the right positions in column B.

	A	B	C
1	Engine Data	Value	Unit
2	RPM		
3	Throttle Position		
4	Manifold Air Pressure		

To display the throttle position in position **B3** you must type the ECU channel name in the box as shown, **TPS**. When done then save the spreadsheet as a template. Load the template while online to the ECU to load live data into all defined positions.

8.6.8 Potentiometer activation

Press the F4 key or the padlock icon to active ECT's potentiometers, being either those created in software or those on the AMC.



In **Settings** you can activate an option which disables the potentiometers once you have pressed **F2** to store a setting.

8.6.9 Search parameters

Type in the channel name you are looking for and press Enter. The data window with that channel will be marked with a red frame. You can use the * as part of the search criteria, the first of the matching display windows will be marked. Press Enter again to jump to the next matching channel name.

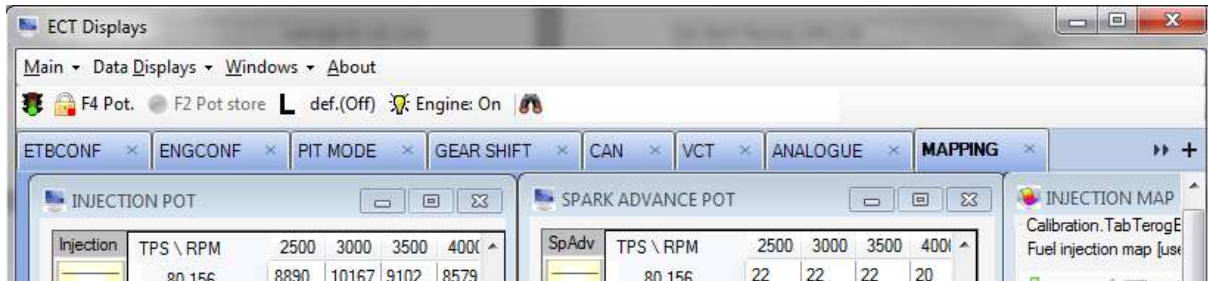


8.6.10 Learn tool parameters

In **Settings** it is recommended to click the box to activate **Enable Learn Tools**. When online you can use the 'L' key to toggle between the fuel self-learn settings of On → Off → software setting.

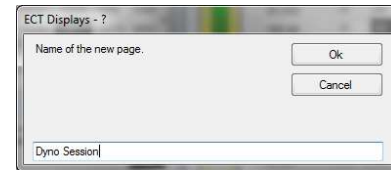


8.7 Multiple Display Sections



You can create displays with multiple sections. This gives you the option to switch from one set of display windows to another without having to close and then open displays.

To add another display container, click on the + at the right edge of the main display window. This will add a tab to the main window. Type a name for the new page and click **OK**. A new blank display page will open, and you can start assigning display windows.



To save the new display layout it must be saved as a workspace. In the 'ECT Main Menu' click on 'Workspace', then click on 'Save Workspace' and key in a name.

To open the new layout, click on 'Workspace' and then click on 'Load Workspace'.

8.8 Strip Chart Mode

The command creates a window which will graphically display the value of any of the ECUs data channels. The maximum number of channels allowed in a window for a strip chart is limited to 12.

You can edit a display window if you see a grid on the gray background. To enable the edit mode, you double click on the gray background or you right click and select **Enable Edit Mode**. When the grid is visible you add a window by right clicking and select **Add Channel**. Check that you have selected the right database.

Now look for the channel. You can scroll through the channel list if you know the index number of the channel or you can search for it.

Use the * to search any combination where your wording exists. For example, if you are looking for oil temperature and oil pressure you could type ***OIL*** and then press Enter. The search will jump to the first channel which includes the words OIL. If this is one of the channels you want, you tick the box. To continue your search, click the word in the search line again and press Enter.

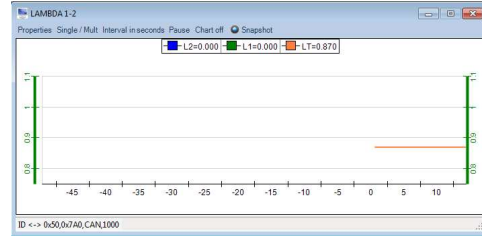
Once you have ticked all the channels you have searched for you click **OK**. The search window closes, and you return to the main display window, now showing your channels.

Once you have created a normal display window with the required channels, right click the window and select **Enable Strip Chart Mode**.

The window is now transformed into a graphic display.

You can configure the display to suit your requirements:

In **Properties** you can set the displayed minimum and maximum thresholds, link data to default database, define whether you want Y-axis displayed on left and/or right side of the window and the color of the graph.



Name	Description	Database	Align to DB	Min	Max	Left axis (single track)	Right axis (single track)	Color	Data channel properties
Exhaust Ba...	Exhaust Ba...	EB-V412F...	<input checked="" type="checkbox"/>	32.00	31.75	<input checked="" type="checkbox"/>	<input type="checkbox"/>	Black	
Exhaust Ba...	Exhaust Ba...	EB-V412F...	<input checked="" type="checkbox"/>	32.00	31.75	<input type="checkbox"/>	<input checked="" type="checkbox"/>	Green	
Exhaust Ba...	Exhaust Ba...	EB-V412F...	<input checked="" type="checkbox"/>	32.00	31.75	<input type="checkbox"/>	<input checked="" type="checkbox"/>	Red	
Exhaust Ca...	Exhaust Ca...	EB-V412F...	<input checked="" type="checkbox"/>	32.00	31.75	<input type="checkbox"/>	<input checked="" type="checkbox"/>	Blue	
Exhaust Ba...	Exhaust Ba...	EB-V412F...	<input checked="" type="checkbox"/>	50.0	49.6	<input type="checkbox"/>	<input checked="" type="checkbox"/>	Orange	
Exhaust Ba...	Exhaust Ba...	EB-V412F...	<input checked="" type="checkbox"/>	50.0	49.6	<input type="checkbox"/>	<input checked="" type="checkbox"/>	Pink	

In **Single / Mult** you can select to display all graphs in one single window or to display each channel individually.

In **Interval** you set the time interval from the right to the left Y-axis, from 2 seconds to 256 seconds.

Pause allows you to stop the strip chart moving and zoom in to analyse the chart.

Legend dock mode lets you position the window channel information window in top of the strip chart, to the right, at the bottom or at left.

Snap Shot transfers the data to the Charting Tool.

8.9 Display Override Functions

Some software versions for Euro-5 and Euro-8 have additional mapping and testing features. In these versions you can enter temporary data for most of the control parameters directly from a data display:

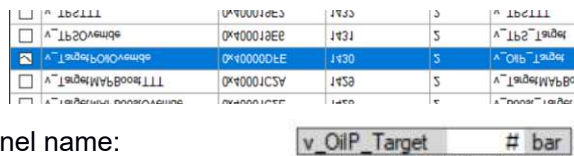


In this example you see that the programmed oil pressure target is 0.7 bar. A different pressure target has been entered in the window on the right, named '**v_OilP_Target**'. By pressing the button marked in yellow this new target for the oil pressure has been applied and the data window for oil pressure shows the new value.

8.9.1 Creating override function

The override feature is only available in some software versions for Euro-5 and Euro-8. Please contact OBR if you want to have access to these versions for your engine development work. The override feature is based on using two new features, a value data window and an enable data window.

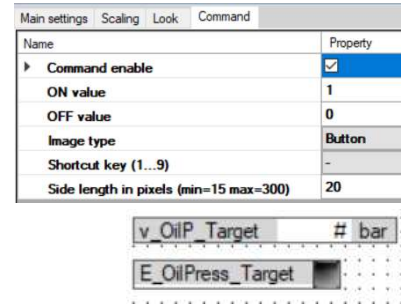
Start by adding a new value data window, for example overriding the oil pressure target. The value data channels are all named by '**v_***', so a **v** for value and then underscore followed by the channel name:



To activate the override value, you must then add another data channel, the enable data window. The enable data channels are all named by '**e_***', so an **e** for enable and then underscore followed by the channel name.



Open the property window for this enable channel and click on the 'Command' tab.



Click on the 'Command enable' box to add a button to the data window.

Set the 'ON value' to '1'.

Set the 'OFF value' to '0'.

Set the 'Image type' to 'Button'.

Select the size of the button you prefer.

Double click on the enable window, un-tick the box 'Align the properties..' and now delete the custom name. Click **OK** to proceed.

The window is now reduced to just the button and you can now place it where you want, for example in front of the value data window.



If you need to access the properties for the button, simply right-click it and select 'Reset default properties'.

Close the display editor when done.

When you click on the new button it turns green when activated.

8.9.2 Working with override function

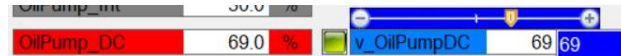
Enable slider to change values

Working with override it is recommended

Mouse or slider driven changes made to a value in the edit box are immediately applied

that you have ticked both boxes as shown in the display container setup.

To enter an override value double click the white data area in the value window.



A new part of the value window opens, showing the current target value from the ECU map.

There are different ways you can change this value:

- Type in a new value in the blue window.
- Drag the slider using your mouse pointer to the new target value.
- Use the + and - buttons to move the slider to the new target value.
- Click on the blue value and use your mouse wheel to select the new target value.

Press **Enter** when done.

You can change the target value with the enable button activated or deactivated, either way works.

If the enable button is activated, the new target



is applied immediately if you have ticked both boxes in the display setup.

9 ASAP3 Communication

ASAP3 is a communication protocol used widely in the automotive industry to transfer data between dyno cells, engine management software, data loggers etc. ASAP3 is mostly used for automated test environments.

ECT includes the ASAP3 communication protocol for use with automated test procedures. The protocol establishes a serial RS232 or an Ethernet communication protocol between a system running an automated test procedure and the command of the engine management unit, the ECU. The communication can be between any PC on the test cell network and the test cell control system. It can also be between any PC running ECT, including other PCs connected to the main PC.

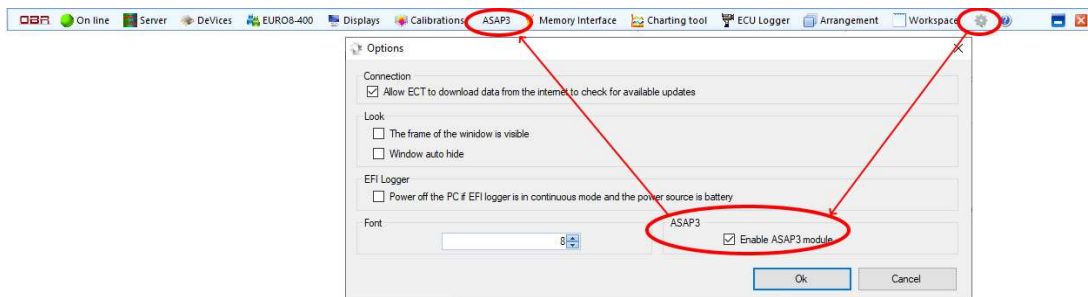
Our basic system allows an easy exchange of data between the PC running ECT, communicating with the ECU, and the test cells software system.

We offer an advanced solution which will allow the test engineer to write a test procedure which the PC will control with test cell interaction.

The ASAP3 communication requires an update of our standard CAN communication interface plus an updated database for your ECU from OBR.

9.1 ASAP3 Options

Open the ECT main program and click on the option menu, marked in yellow on the right. Tick the box to enable the ASAP3 option, click **OK**.



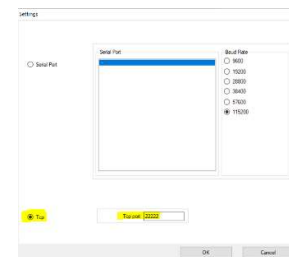
You will see a new tab added to the ECT tool's main menu, '**ASAP3**'.

9.1.1 Serial port communication

Open the ASAP3 tab and click on the '**Option**' icon in the upper right-hand corner.

ASAP3 communication with the test cell software can be enabled using a serial RS232 port, you must use an USB Serial adaptor for this setting. OBR can supply these interfaces.

If you use the serial port, you must select your preferred data baud rate. Anyway, serial links are slow, and this setting is not recommended.



9.1.2 Ethernet communication

Select the Ethernet option and connect your PC to the test cell with this connection.

Select the port address, typically either 22222 or 22226. This port address must match the port address selected in your test cell's ASAP3 section. Data exchange using this option is much faster than a serial link, you can expect data refresh rates in less than 2 ms.

Click **OK** to select the Ethernet communication.

9.2 Establish ASAP3 Communication

Click the ASAP3 tab in the main ECT tool.
 Click on 'START' and select the database for the ECU controlling your engine and click **OK**.



If you see an error message – ‘Unlicensed Command’ – please contact OBR for an updated file for your EFP02 or EFT20 interface.

Enable the ASAP3 communication in your test cell’s computer system and you should now have an active data exchange between your ECU and your test cell.

Communication is now established between the ECU and the test cell’s computer system.

Reading time					
Reading time	Name	Value	Unit	Emulator LUN	
2020/05/21 15:49:46.710	EFI_TPS_Target	0.0	%		
2020/05/21 15:49:46.710	EFI_TPS	0.3	%		
2020/05/21 15:49:46.710	EFI_SparkAdvance	13.25	deg		
2020/05/21 15:49:46.710	EFI_CAM_In_1	0.00	deg		
2020/05/21 15:49:46.710	EFI_CAM_In_2	0.00	deg		

Writing time																																			
Writing time	Name	Value	Unit	Emulator LUN																															
FUELMASS_MULT																																			
<table border="1"> <thead> <tr> <th>FO</th> <th>0</th> <th>1</th> <th>2</th> <th>3</th> <th>4</th> <th>5</th> <th>6</th> <th>7</th> <th>8</th> <th>9</th> <th>10</th> <th>11</th> <th>12</th> <th>13</th> </tr> </thead> <tbody> <tr> <td>Mult</td> <td>1.000</td> <td>1.000</td> <td>1.000</td> <td>1.000</td> <td>1.000</td> <td>1.000</td> <td>1.000</td> <td>1.000</td> <td>1.000</td> <td>1.000</td> <td>1.000</td> <td>1.000</td> <td>1.000</td> <td>1.000</td> </tr> </tbody> </table>						FO	0	1	2	3	4	5	6	7	8	9	10	11	12	13	Mult	1.000	1.000	1.000	1.000	1.000	1.000	1.000	1.000	1.000	1.000	1.000	1.000	1.000	1.000
FO	0	1	2	3	4	5	6	7	8	9	10	11	12	13																					
Mult	1.000	1.000	1.000	1.000	1.000	1.000	1.000	1.000	1.000	1.000	1.000	1.000	1.000	1.000																					
spksaf_sa_cyl_v																																			
<table border="1"> <thead> <tr> <th>FO</th> <th>0</th> <th>1</th> <th>2</th> <th>3</th> <th>4</th> <th>5</th> <th>6</th> <th>7</th> <th>8</th> <th>9</th> </tr> </thead> <tbody> <tr> <td>OSA</td> <td>0.00</td> <td>0.00</td> <td>0.00</td> <td>0.00</td> <td>0.00</td> <td>0.00</td> <td>0.00</td> <td>0.00</td> <td>0.00</td> <td>0.00</td> </tr> </tbody> </table>						FO	0	1	2	3	4	5	6	7	8	9	OSA	0.00	0.00	0.00	0.00	0.00	0.00	0.00	0.00	0.00	0.00								
FO	0	1	2	3	4	5	6	7	8	9																									
OSA	0.00	0.00	0.00	0.00	0.00	0.00	0.00	0.00	0.00	0.00																									
FUELMASS_MULT																																			
<table border="1"> <thead> <tr> <th>FO</th> <th>0</th> <th>1</th> <th>2</th> <th>3</th> <th>4</th> <th>5</th> <th>6</th> <th>7</th> <th>8</th> <th>9</th> <th>10</th> <th>11</th> <th>12</th> <th>13</th> </tr> </thead> <tbody> <tr> <td>Mult</td> <td>1.000</td> <td>1.000</td> <td>1.000</td> <td>1.000</td> <td>1.000</td> <td>1.000</td> <td>1.000</td> <td>1.000</td> <td>1.000</td> <td>1.000</td> <td>7.000</td> <td>1.000</td> <td>1.000</td> <td>1.000</td> </tr> </tbody> </table>						FO	0	1	2	3	4	5	6	7	8	9	10	11	12	13	Mult	1.000	1.000	1.000	1.000	1.000	1.000	1.000	1.000	1.000	1.000	7.000	1.000	1.000	1.000
FO	0	1	2	3	4	5	6	7	8	9	10	11	12	13																					
Mult	1.000	1.000	1.000	1.000	1.000	1.000	1.000	1.000	1.000	1.000	7.000	1.000	1.000	1.000																					

IP: 127.0.0.1 ASAP - TCP 22226 Connected to AuSy ASAP3Tool 2.01

9.3 Automated Test Procedures

OBR can supply an advanced version of the ASAP3 link in which you can generate your desired engine test procedure. In this program you can specify any manipulation of the ECU settings to generate a test session for any length of time. This way you can, for example, design a durability test session or you can prepare a test for optimization of variable camshaft timing versus applied spark advance and engine load.

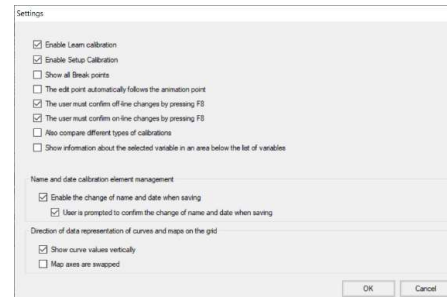
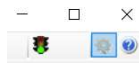
Please contact OBR for further details about this option.

10 Calibrations

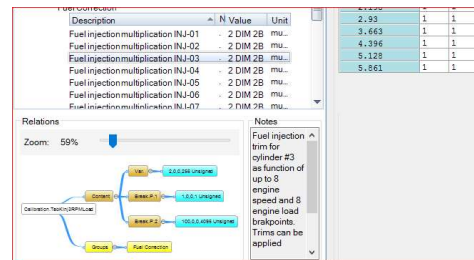
This section gives access to the engine and ECU setup maps.

10.1 Calibration Options

You can access the main settings for this tool by clicking on the settings icon in the right-hand upper corner of the display window and selecting your preferred options:



- **Enable learn calibration**, this option is required for the calibration tool to open learn maps.
- **Enable setup calibration**, enables the calibration tool to open learn the ECU setup maps. Except for Euro-2 this option should always be selected.
- **Show all break points**, select this option if you want all available breakpoints in tables and maps to be displayed. If you want to hide unused breakpoints do not tick this option.
- **The edit point automatically follows the animation point**, this this option if you want the manual mapping cursor to follow the animated cursor. Do not select this option if you prefer to move the manual cursor yourself.
- **The user must confirm off-line changes by pressing F8**, select this recommended option to manually confirm changes made to settings when working off-line by pressing **F8**. Upon pressing **F8** changes are saved in the map but not to disc.
- **The user must confirm on-line changes by pressing F8**, select this recommended option to manually confirm changes to be written to the ECU when working on-line by pressing **F8**. Upon pressing **F8** changes are stored in the map in the ECU. If you want changes to be written to the ECU momentarily do not select this option.
- **Also compare different types of calibrations**, select this option if you always want to compare setting in two maps, even if of different types. It is not recommended to select this option.
- **Show information about the selected variable in an area below the list of variables**, enable this option if you like the tool to show how parameters are linked:
- **Enable the change of name and date when saving**, it is recommended to check this option.
- **User is prompted to confirm the change of name and date when saving**, select this option if you want to confirm name and date each time you save a map to disc.
- **Show curve values vertically**, 1-dimensional tables are preferred shown as a column. Select this option.
- **Map axes are swapped**, gives you the option to swap X and Y-axis in 2-dimensional maps. Not a recommended setting.

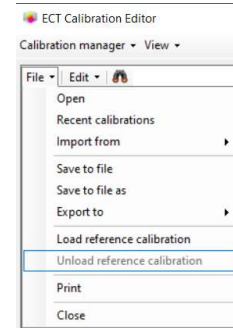


It is possible to work with the maps off-line as well as on-line. While any changes in the engine map reflect the engine calibration on the fly, the setup map needs the ECU to be reset to read the new settings.

10.2 File Manager

Click on the tab File to get access to:

- Open a calibration
See section 11.3.
- Load a recent calibration
Quick access to previous loaded calibrations.
- Import and export XML data file
Import and export selected data from a calibration to a file, section 11.7.
- Save file
Save file to existing file or create new file.
- Load reference calibration
Load a file for reference while generating a calibration, see section 11.5.
- Unload reference calibration
Click this command at any time to unload the reference file.
- Print
Click this command to access the print manager, see section 11.8.

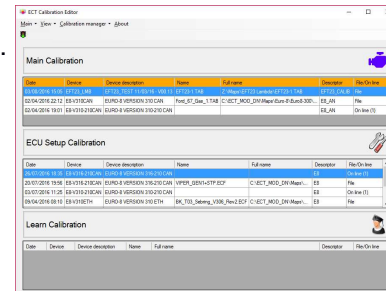


10.3 Load a Calibration

Click on the gray area where you see **Main Calibration** to load an engine map. This is the map used to optimise the engine mapping. The engine map file has a TAB or TABX file extension.

Click on the gray area where you see **ECU Setup Calibration** to load the ECU setup map. This is the map used to configure the ECU to the engine type, the vehicle type and the sensors used on the engine and transmission.

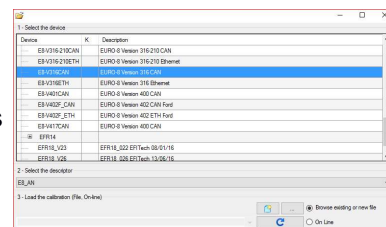
The ECU setup map file has an ECF or ECFX file extension.



Click on the gray area where you see the **Learn Calibration** to load the ECU learn maps. Learn maps contain the correction factors, the factors stored for adjusting the injection times to reach the lambda target values.

The learn map file has an LRN file extension.

Click on the database name for the ECU in use in '**Device**', this sets the communication protocol.



Select the engine load – you can select the engine load (the Y-axis in the calibrations) expressed as:

- **AN** - throttle angle
- **MAP** - manifold air pressure
- **MAF** - mass air flow

To load a calibration, click on:



New blank calibration



Load an existing calibration from disc

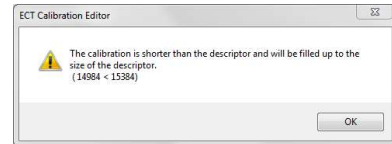


Load a calibration on-line from the ECU

Make sure you are connected to the ECU and the ignition is switched on.

You might see a message about the length of the map:
“The calibration is shorter than the descriptor....”

This is because you have loaded a map created with an older database version than the one you have selected. It is not an error message, just click **OK**.



When you save the file to disc the size will be adjusted automatically. Importing a calibration from an earlier version you must check settings of any new features. Failure to do so can prevent you from starting the engine or – in the worst case – cause damages to the engine!

Once a map is loaded into the Calibration tool – on-line or off-line – you can save it to disc by clicking in **File** and then click on either **Save to file** or **Save to file as**.

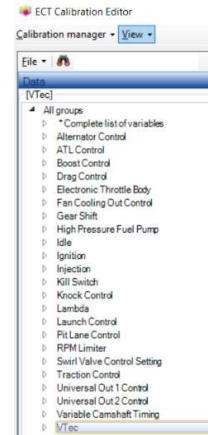
10.4 Calibration Display

When you open a calibration file all available features for this version of ECU and software version are listed with its main groups shown in a tree at the left side of the display.

To open a group to gain access to the calibration parameters click on the arrow to the left of the group name.

When you open a group, you can sort the content alphabetically or by numeric values.

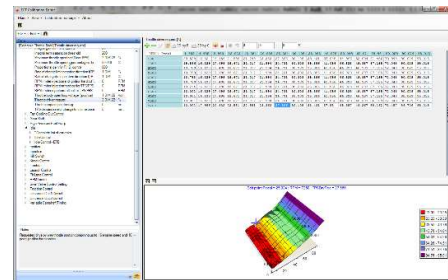
- Sort content alphabetically by clicking on the heading **“Description”**.
- Sort content by numeric value by clicking on the heading **“Value”**.



The screen is split between the tree on the left and selected tables and graphics are displayed on the right. You can adjust the split ratio between left and right. Using your mouse, grab the split line between the 2 screen halves and move it to your preferred position.

In the same way you can adjust the split between top and bottom in the right-hand display, between the numeric of the map and the graphic display.

The settings are saved when you exit the Calibration Manager.



10.5 Reference Map

You can load a reference file in the calibration editor once you have loaded the engine map.

Once a map is loaded in the editor click **File**, then click **Load Reference File**.

Now locate the file you want to use as a reference and click **Open**.

Using the colors red and green it is easy to check changes in any sections of the map.

Red illustrates a decreased value while green illustrates an increased value.

By right-clicking on the main group, selecting **‘Restore the values...’**, the changes can easily be cancelled, returning the cell values to those in the reference map.

Fuel injection map [usec]

MAP \ RPM 400 600 800 1000 1200 1500 1700 2000 2500 3000 3500 4000 4500 5000 5500 6000 7000 7500

200	6000	4000	1964	1873	3406	3713	4232	2579	2544	1133	1315	1626	2129	2707	3349	3826	3383	3133	2883
254	6000	4000	2975	2000	2490	3411	2924	3244	3244	1716	2027	1696	2138	2939	3196	4020	3862	3636	3386
300	6000	4000	2484	2215	1968	2139	2260	2390	2155	1395	1695	2439	2904	3002	2525	3155	3112	3077	2927
350	6000	4000	2361	2794	2000	2000	2300	2390	2886	1773	2439	2590	3263	3347	3836	4926	4638	4523	4273
400	6000	4000	3280	3094	2200	2107	2050	2390	2196	2429	2851	2965	3872	4049	4784	4855	4857	4908	4658
450	6000	4000	3538	3395	2250	2150	2196	2091	2504	2428	2944	3529	4000	4273	4724	5053	5135	4893	4643
500	6000	4000	3926	3695	2399	2248	2027	1977	3028	2365	3408	3862	4453	5412	5690	5265	5658	5524	5274
550	6000	4000	4115	3936	2448	2859	3263	2563	3240	3424	3862	4521	5039	6076	6095	6405	6163	5724	5476
600	6000	4000	4404	2700	2448	2675	3123	2896	4274	4513	4540	4747	5381	6842	5973	7145	7252	6394	5933
650	6000	4000	4492	3597	2815	2947	3088	3619	4454	4226	4574	5379	5967	7719	7602	7740	7448	7142	6921
700	6000	4000	4980	3647	3220	3467	3420	3624	6321	6712	6850	8463	8738	8236	8684	7617	8526	8017	7417
750	6000	4000	5124	4192	3932	4361	3868	3915	6062	5941	5898	6317	7201	9274	7602	8790	9119	8471	7764
760	6000	4000	5268	4718	4419	4038	4358	3665	6480	6913	6785	6906	8027	8703	8727	9830	9721	8844	8096
775	6000	4000	5414	5520	5298	4793	5097	4407	6421	6711	7144	7180	8417	9859	8992	10463	10178	9109	8359
800	6000	4000	5558	5731	5267	5895	4865	4688	6778	6227	7463	8391	8594	10547	12454	12094	11097	9938	8505
850	6000	4000	5946	5956	5435	5939	5339	5542	7628	7471	7732	8645	9638	11222	11673	10759	11021	9701	8912
900	6000	4000	6134	5989	5953	6035	6408	5636	7661	9376	9220	9479	10003	11903	12461	12671	13153	10441	9387
950	6000	4000	6423	6322	6247	6273	6856	5913	9851	8512	8747	10626	10613	12903	12742	12172	11963	11907	10187
1000	6000	4000	6712	6697	6690	6643	7151	7464	10437	10852	9519	10209	10192	12361	14267	13428	11649	11887	10608
1026	6000	4000	6856	6850	6821	6821	7325	7173	10581	9922	10276	11725	11899	13224	12345	12446	13688	11693	10804
1050	6000	4000	7000	7000	7000	7000	7500	6200	7000	8417	8542	11287	11904	12583	12425	11690	12797	12716	11590

You can unload the reference file by clicking **File**, then click **Unload Reference File**.

10.6 Map Editing

This is an example of loading and changing the engine calibration.

A calibration is divided into various groups, these can be expanded by clicking the arrow pointing right. You can navigate between the sections using the up, down, left and right arrow keys and the mouse.

Description	N	Value	Unit
Activation time delay learn conditions valid		0	Sec
Active exceeding lambda target value +/- offset		0.008	+/-
Active if d(TPS%) transient is less than		30	bits
Active if engine speed exceeds limit		1000	RPM
Active if throttle position exceeds limit		3.906	%

You can sort the content in each group alphabetically by clicking on the heading named **Description** and numerically by clicking on **Value**.

Calibration parameters are divided into 3 categories:

- Constants
- 1 dimensional tables
- 2 dimensional maps

10.6.1 Change a Constant

To change the value of a constant, simply double click the constant text and then key in a new value. Press Enter to confirm the change.

If you work on-line with the ECU, then the ECU will immediately change its setting once the new data is entered – unless you are working on-line with the ECU setup map.

Description	N	Value	Unit
Fuel injection map	..	2 DIM 2B	usec
Primary fuel injector VBATT compensation		1 DIM 2B	usec

Description	N	Value	Unit
Derivative gain for P.I.D control		0	
ETB control signal frequency		500	Hz
Integral gain for P.I.D. control		150	
Integral term saturation threshold		90	
Maximum throttle position (Fuel RPM)	?	FUEL 2B	%

Description	N	Value	Unit
Fuel injection trim (FuelCall)	1 DIM	0.2	
Fuel injection trim (Fuel T)	1 DIM	mult 0.2	
Fuel injection trim (W T)	1 DIM	mult 0.2	
Fuel injection trim (TPS)	1 DIM	mult 0.2	
Fuel injection trim (Throttle T)	1 DIM	mult 0.4	


10.6.2 Change a 1-dimensional table


A 1-dimensional calibration table links values of a sensor or a calculated parameter with a variable output, which can be a trim offset or a multiplication factor.

Use the up and down arrows keys to move the cursor between breakpoints.

If you are working online, an animated cursor displays the current load condition. You can toggle this cursor ON and OFF by clicking the button **F12 ANIMATION**.

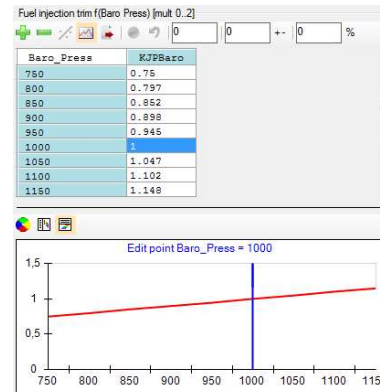
You can let the edit point follow the animation point. If you always want this feature active, then open the settings in the calibration editor and tick the box **The edit point automatically follows the animation point**.

Optionally, you can select this feature directly from the engine map by clicking the icon .

Click on  to open the graphic display of the data.

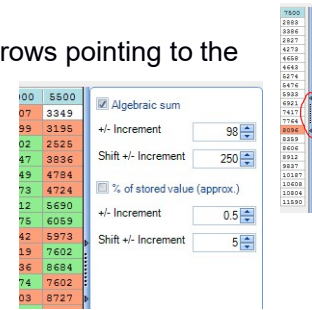
To change a value of any of the cells either double click on it using your mouse or move the blue cursor to the cell and then press Enter. Now key in the new value and press Enter.

Alternatively, use the + and - keys to change the values.



You can adjust the steps applied by these keys.

Look for the button on the right edge of the table; it is marked with two arrows pointing to the left and dots, here marked in red.



Click on the dots to open the configuration window. You can modify the cells using an algebraic sum or a percentage correction.

You can define the changes of each + or - key press and the coarse change by **SHIFT +** or **SHIFT -**.

The 3 windows on top of the table or map window can be used to modify one or more cells as well as displaying the change to each cell from the base setting.

The left window can be used to fill all marked cells with a new value for all cells. This can also be done by marking the cells to be changed, press Enter, key in the new value and then press Enter again.

- The left window can be used to fill all marked cells with a new value for all cells. This can also be done by marking the cells to be changed, then press Enter, key in the new value and then press Enter again.
- The middle window is used if you want to increase or decrease cells with a specific value.
- The right window will increase or decrease selected cells with a percentage correction.



If you want to cancel your changes press **F11** or click the icon

If you want to save your changes into the map, then press **F8** or click the icon

10.6.3 Breakpoint editor in 1-dimensional tables

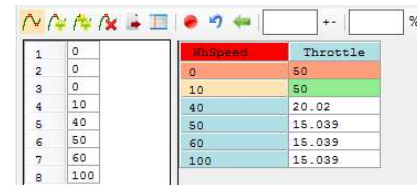
You can change the breakpoints in tables and maps.

Press **F9** or click the icon to access the break point editor.

Now click on any of the break points, it will turn light brown.

Using the keys on top of the window you can now:

- Delete a break point, press DEL or click the icon
- Insert a break point, press INS or click the icon
- Free edit of all break points click the icon



Press **F9** or click the icon to close the breakpoint editor.

Please also see the section with map comparison.

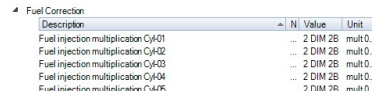
In section Options you can choose between displaying a table horizontally or vertically.

It is recommended to select the vertical option.

10.6.4 Change a 2-dimensional map

A map links values of two measured channels to a calculated parameter with a variable output, which can be i.e. injection pulse width, spark advance degrees, solenoid valve duty cycles, camshaft positions, offsets or multiplication factors.

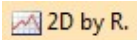
Use the up, down, left and right arrow keys to move the cursor between breakpoints.

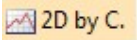



If you are working online, an animated cursor displays the current load condition. You can toggle the cursor ON and OFF by clicking the button **F12 ANIMATION**.

You can let the edit point follow the animation point. If you always want this feature active, then open the settings in the calibration editor and tick the box '**The edit point automatically follows the animation point**'.

Optionally, you can select this feature directly from the engine map by clicking the icon

Click on  to open 2-dimensional graphic display, showing fuel lines for each engine load site. You can toggle between showing a single line and all lines.

Click on  to open 2-dimensional graphic display, showing fuel lines for each engine speed site. You can toggle between showing a single line and all lines.

Click on  to open 3-dimensional graphic display. You can rotate the display, click and hold your left mouse button and rotate the graphics. To change a value of any of the cells either double click on it using your mouse or move the blue cursor to the cell and then press Enter. Now key in the new value and press Enter.


Alternatively, use the + and - keys to change the values. You can adjust the steps applied by these keys. Look for the button on the right edge of the frame; it is marked with two arrows pointing to the left and dots, here marked in red.

Click on the dots to open the configuration window. You can modify the cells using an algebraic sum or a percentage correction. You can define the changes of each + or - key press and the coarse change by **SHIFT +** or **SHIFT -**.

The 3 windows on top of the table or map window can be used to modify one or more cells as well as displaying the change to each cell from the base setting. The left window can be used to fill all marked cells with a new value for all cells. This can also be done by marking the cells to be changed, then press Enter, key in the new value and then press Enter again.


- The left window can be used to fill all marked cells with a new value for all cells. This can also be done by marking the cells to be changed, then press Enter, key in the new value and then press Enter again.
- The middle window is used if you want to increase or decrease cells with a specific value.
- The right window will increase or decrease selected cells with a percentage correction.

If you want to cancel your changes press **F11** or click the icon .




If you want to save your changes into the map then press **F8** or click the icon .


10.6.5 Breakpoint editor in 2-dimensional maps

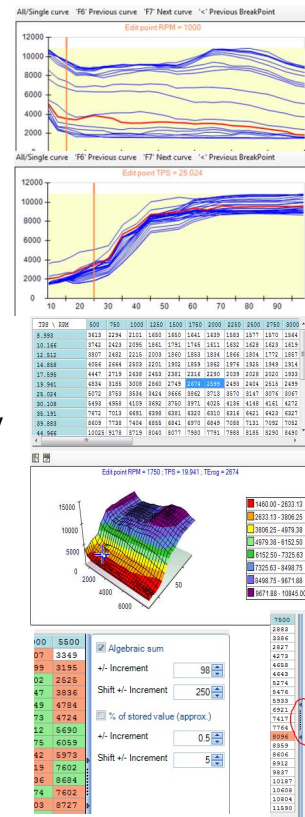
You can change the breakpoints in any 2-dimensional maps.

Press F9 or click the icon  to access the break point editor. Now click on any of the break points on either the X or Y-axis, it will turn light brown.

Using the keys on top of the window you can now:

- Delete a break point, press DEL or click the icon .
- Insert a break point, press INS or click the icon .
- Free edit of all break points click the icon .

Press F9 or click the icon  to close the break point editor. Please also see the section with map comparison.

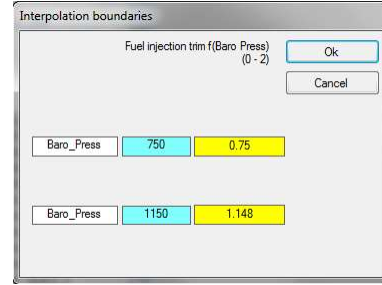


0 0.023 +- 2.609 %

	W.Speed	Throttle
1	0	
2	0	50
3	0	10
4	10	20.02
5	40	15.039
6	50	15.039
7	60	15.039
8	100	15.039

10.6.6 Interpolation

You can interpolate values between two selected cells in a table or map. Click on the first cell, hold your left mouse button pressed and drag the cursor down, marking the cells. Then release the button.

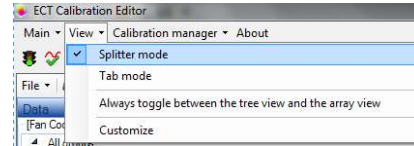


Using the interpolation function the tool can automatically calculate calibration values. Mark the cells in the column or row you want to linearize, click the icon and now key in the interpolation boundaries. Click **OK** to perform the calculation and return to the map.

10.6.7 Comparing maps

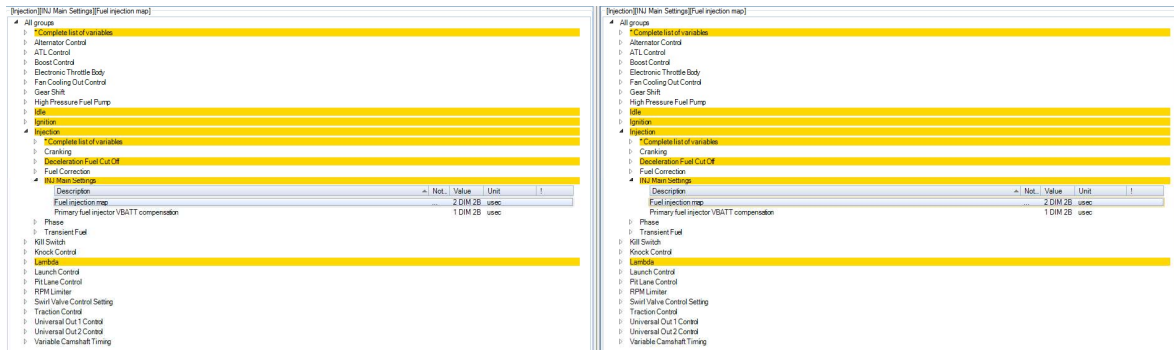
You can compare the contents of two calibrations from your PC.

You can choose to display the two calibrations side by side (Splitter mode) or on two individual tabs (Tab mode).



Open the calibration manager and load the first of the two calibrations to compare. Now click on **Calibration Manager** and select **Load empty frame for Main Calibration**. Load the second calibration.

Displaying the two calibrations side by side any differences between the two are marked in yellow:

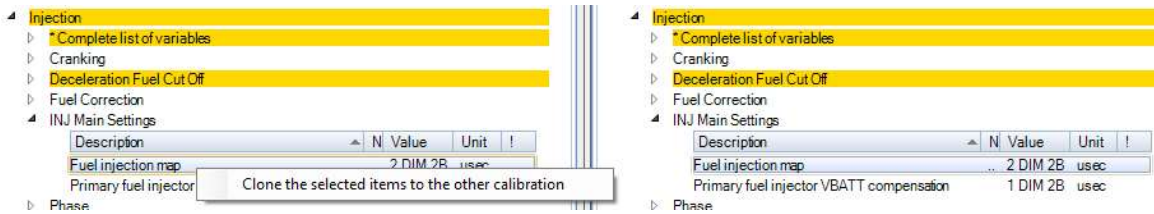


You can compare calibrations working either off-line or on-line with the ECU.

To see the differences between i.e. the two fuel maps, open the fuel map in both maps. The colored cells indicate that values differ between the two maps:

10.6.8 Clone settings

You can clone settings from one calibration directly into a second calibration. Go to the section in the calibration you want to copy.




Right click the section you want to copy to the other calibration and select **Clone the selected items to the other calibration**.

This way you can easily copy constants, tables and maps between calibrations.

10.6.9 Copy and paste

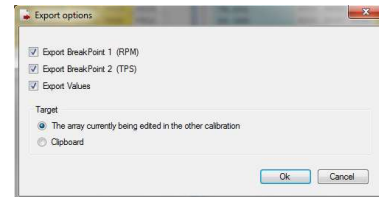
While comparing calibrations there are several ways you can blend values from one map to another map. If you want to copy all cells and break points from one map to the other, you can do so with two clicks of the mouse.

Open the two calibrations. Open the maps to copy data from and to.

Having the two maps next to each other, click on this icon  on the calibration you want to export data from.

In 'Export Option' you have 3 choices:

- Export breakpoint 1 (RPM)
Only export breakpoints on the X-axis
- Export breakpoint 2 (Load)
Only export breakpoints on the Y-axis
- Export values
Export data from all the cells in the map, including the hidden cells.



Select the target for your data export:

- The array currently being edited in the other calibration
Copy all data cells from one map to the other map.
- Clipboard
Copy all data cells from one map to the PC's clipboard.

Select your preferences and click **OK**.

The complete map, including breakpoints, is now being copied to the other map.

You can copy part of a table or a map or all data cells from one calibration to another.

Mark the data cells to copy or click on the upper left cell in a table or map to mark all cells. Press '**CTRL+C**' to copy cells or click on '**Edit**' in the main menu and select '**Copy**'. You can copy data cells, or you can copy data cells together with the X and Y-axis breakpoints.

Data on the clipboard can now be pasted into another calibration or into other documents, for example Word or Excel.

In Excel click on the cell you want to use as the top left cell and click **CTRL+V**.

You can also insert the data into another map or calibration. Mark the section in a map where you want to paste the data, click on '**Edit**' and select '**Paste – from clipboard to selected cells**'.

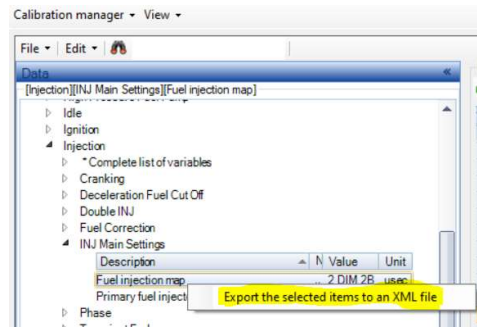
You can also use the '**CTRL+V**' to paste the data.

Click or press **F8** to save the changes or **F11** to discard changes.

10.7 XML Files

XML is a file format used for sharing both format and data. In ECT we use it to save part of or all the data from a calibration to a file on your PC, shared via a network or update from an older to a newer version.

If you are modifying a calibration, you can right-click the groups in which you have made alterations and select **'Export the selected items to an XML file'**. You can include one single group or several groups. ECT will save an XML file on your PC in the display folder linked to your ECU version.



The file can then be imported by another user on the network by clicking on **'File'** and then **'Import from XML'**. This way users can easily share file updates as this feature is available for both engine calibrations and for ECU setup calibrations. Once imported, the changes from the original map have now been applied to the updated calibration file.

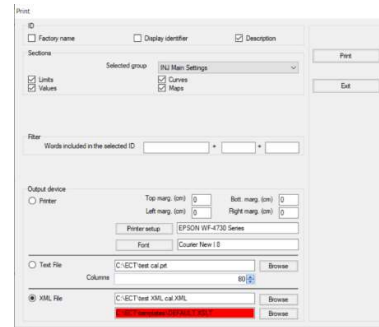
The XML export and import found under **'File'** is for use with a new blank calibration, intended to update a calibration from an older to a newer software version. If data is found outside boundaries set in the new version, data will be corrected to respect the updated settings.

10.8 Print

The print manager allows you print the full dataset of a calibration or parts of it.

In section **ID** you can select the channel name to include with the data:

- **Factory name**
Prints channel names using the internal software names. Not recommended.
- **Display identifier**
Prints channel names using the display identifier names. Not recommended.
- **Description**
Prints channel names using the normal channel names, recommended selection.



In **Sections** you select which data type to include with your printed data:

- **Limits**
Prints system limits. This parameter is for use with Euro-4 only.
- **Values**
Prints the value of all constants in the calibration.
- **Curves**
Prints the value of all tables in the calibration.
- **Maps**
Prints the value of all maps in the calibration.

In **Order** you select the printing order of the data channels. It is recommended to tick only the box **'Sorted by group'**; this lists channels sorted in groups and each group sorted alphabetically.

In **'Filter'** you can include up to 3 words included in the names for the channels you want to include in your print.

In “**Output device**” you select how to print your data.

- **Printer**
Select your printer or choose to print to file as for example a ‘**PDF**’ document.
- **Text File**
Print data as a text listing.
- **XML file**
Print data to an XML data file.

Click on ‘**Print**’ or ‘**Print preview**’ to start printing.

11 Memory Interface

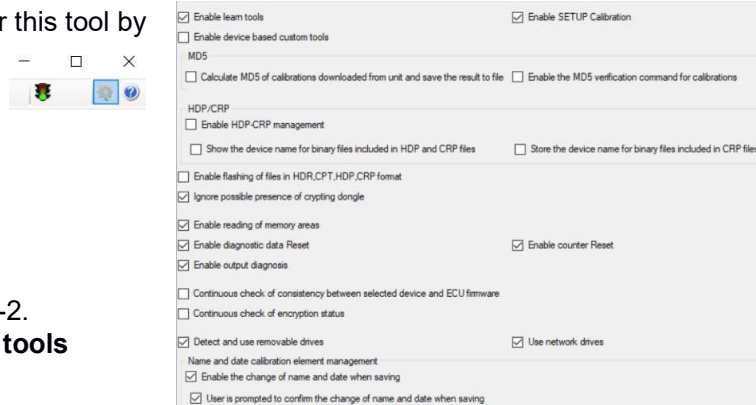
This section gives access to communication with the ECU, updating firmware and sending and receiving calibrations. You can also access the diagnostic features from this tool.

11.1 Memory Interface Options

The Memory Interface is used to program an ECU with firmware and calibrations. It is also used to read calibrations from the ECU.

Furthermore, it can be used to create files for protected and encrypted ECU versions.

You can access the main settings for this tool by clicking on the settings icon in the right-hand upper corner of the display window and selecting your preferred options:



- **Enable learn tools**
Required setting.
- **Enable setup maps**
Required setting except for Euro-2.
- **Enable device-based customs tools**
Not recommended.
- **Calculate MD5 of calibrations**
Special verification tool, not required for standard installations.
- **Enable MD5 verification**
Special verification tool, not required for standard installations.
- **Enable HDP-CRP management**
Setting for encrypted option, leave unticked.
- **Show the device name in HDP and CRP files**
Setting for encrypted option, leave unticked.
- **Store the device name for CRP files**
Setting for encrypted option, leave unticked.
- **Enable flashing of HDR and CRP files**
Setting for encrypted option, leave unticked.
- **Ignore encrypting dongle, tick the box**
Recommended setting.
- **Enable reading of memory areas**
Not required.
- **Enable diagnostic data reset, tick the box**
Optional setting for use with on-board diagnostic, only for use with Euro-4.
- **Enable counter reset, tick the box**
Optional setting for use with on-board diagnostic, only for use with Euro-4.
- **Enable output diagnosis**
Optional setting for use with on-board diagnostic.
- **Continuous check of consistency**
Not required.
- **Continuous check encryption**
Setting for encrypted option.
- **Detect and use removable drives**
Recommended setting.

- **Use network drives**
Recommended setting if you are connected to a network.
- **Enable name and date change**
Recommended setting.
- **User prompt at saving**
Recommended setting.

11.2 ECU Comms

This section gives you access to send and receive ECU calibrations and ECU firmware.

11.2.1 Send calibrations

Click on **ECU Comms** and select **Send** to get access to commands for sending main calibrations, ECU setup calibrations to the ECU.

Make sure you have selected the right ECU database. Next locate the calibration folder in the tree on the left. This section will allow you to send firmware, main calibration file and ECU setup calibration.

To send firmware to an ECU you will need to use CAN communication, using either our EFP02C or EFT20 USB CAN interfaces.

Start by switching the ECU ignition off. Click the firmware version you want to send. Click **Send Firmware to ECU** and follow the instructions on screen.

Warning:

If you switch the ECU off during the transmission of firmware, the ECU will appear to communicate when you switch it on again. But this is quickly sorted out. Simply repeat the firmware transmission, the ECU will be back communicating.

To send a calibration to the ECU, make sure you have selected the right ECU database. Next locate the calibration folder in the tree on the left. Select the calibration to send and the destination location. Click on '**Send Calib to ECU**'.

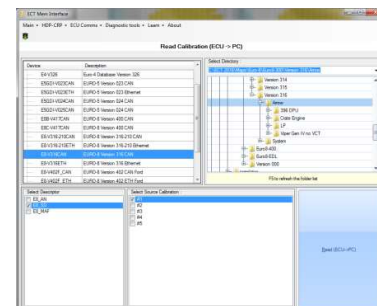
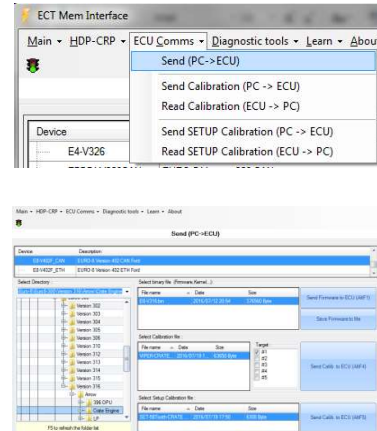
To send the ECU setup calibrations to the ECU click on the calibration to send. Now click **Send Calib to ECU**.

11.2.2 Read calibrations

Click on **ECU Comms** and select **Read** to get access to commands for sending main calibrations, ECU setup calibrations and learn files to the ECU.

Make sure you have selected the right ECU database. Next locate your calibration map folder in the tree on the right. This section will allow you to read main calibration files and ECU setup calibrations.

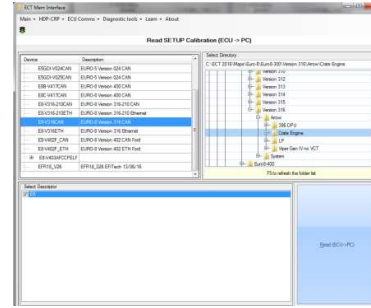
To read the main calibrations from the ECU click to select the descriptor settings and select which of the multiple locations you intend to read from. Click **Read**.



You will be prompted for a calibration name, but the tool will propose the current name.

Next you will be asked if you want to mix the calibration with the learn calibration map.

- If you are mapping the engine and are using the ECU self-learn feature, you select YES to this option. Have patience while the tool creates the new fuel map, you will see when it has finished.
The ECU software has an option to perform this process automatically. If you use that option then click NO to this option.
- If you are not mapping the engine and only want the calibration from the ECU, select NO to this option.



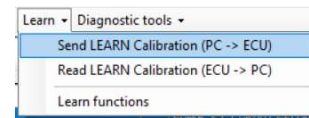
To read the ECU setup calibration make sure you have selected the right ECU database. Next locate your calibration map folder in the tree on the right. Click **Read**.

11.3 Learn

This section gives access to send and receive learn calibrations from the ECU.

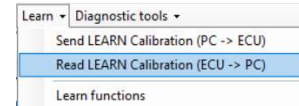
11.3.1 Send learn calibration

Use this option to send a learn calibration back to the ECU. Make sure you have selected the right ECU database. Next locate the calibration folder in the tree on the left. Select the learn calibration to send and the destination location. Click on '**Send Calib to ECU**'.



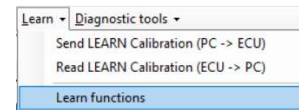
11.3.2 Read learn calibration

Use this option to read a learn calibration from the ECU. Make sure you have selected the right ECU database. Next locate the destination calibration folder in the tree on the left. Select the ECU location from which you want to read the learn calibration. Click on '**Read (ECU->PC)**'.



11.3.3 Learn functions

This section gives access to learn reset functions in the ECU.



Section '**Reset functions**' gives you access to reset the fuel learn calibrations withing the ECU. Select which of the available calibrations to reset and click **OK**.

Section '**Min max adjusting**' is for used with Euro-4 **only** and is used to set the minimum and maximum throttle positions for a cable operated throttle body. To set the minimum position, wind the idle speed screw on the throttle body so far back that the throttle blade closes fully in the housing. When done, click **OK** to set the minimum position and then confirm by clicking **OK**.

To set the maximum position, open the throttle fully and click **OK** and confirm by clicking **OK**. To save this setting in the ECU, switch the IGN KEY off, the main relay will click and then turn the IGN KEY back on. During this process, the ECU saves all learned data.

11.4 Diagnostic Tools

This section includes tools to reset timers in Euro-4 and a tool to check all outputs in all our ECUs.

11.4.1 Reset diagnostic data

Section used to reset all diagnostic flags in Euro-4.

11.4.2 Reset counters

Section used to reset all diagnostic counters in Euro-4.

11.4.3 Output diagnose

This section is used to check injector drivers, coil drivers and digital outputs in all ECUs.

To start a test, click on the database for the ECU in use.

Next select which driver group to test:

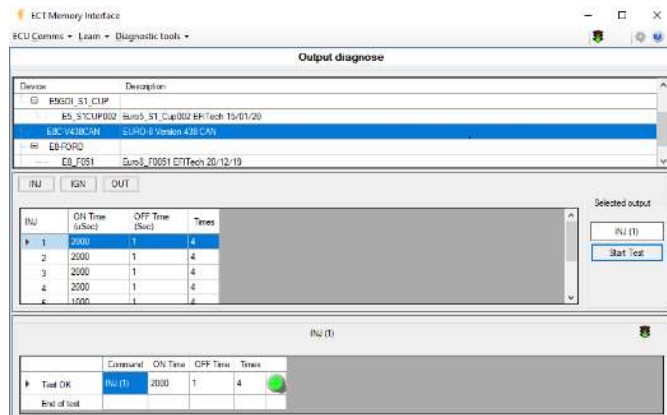
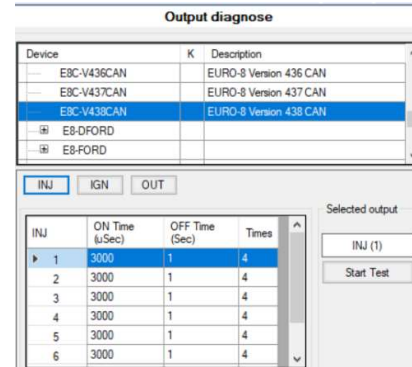
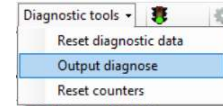
- Injector drivers (**INJ**)
- Ignition drivers (**IGN**)
- PWM and relay drivers (**OUT**)

In the table for each of the drivers, key in the driver on-time in microseconds (μ s), key in the time between consecutive tests in seconds (s) and the number of repetitive tests.

Select which driver group to test, click on either **INJ**, **IGN** or **OUT**.

In the example the injector driver test will switch the driver ON for 2,000 μ s (2 ms) with 1 second between each of the 4 tests. Please note that the injector and ignition driver numbers might refer to the cylinder numbers, this is dependent on how the engine firing order is defined in the ECU setup calibration.

Click on the driver number to test, here #1. Click on the button marked '**INJ(1)**' to start the test. Once completed the system will confirm the driver status – '**OK**' or '**Fail**'.



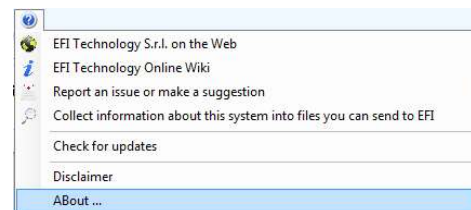
11.5 MD5 Calibration Verification

A new way to compare and verify maps programmed into any of the ECU's has been developed. Using this process, it is possible to let for example a scrutineer check if the ECU maps conform to provided sample maps. It is not necessary for the engine builder to hand over the real maps. The engine builder will use the ECT to generate a signature file for each of the maps programmed into the ECU, being either engine or setup maps.

11.5.1 Tool version

The compare function is available in ECT from version 314.

Please check your ECT version is compatible, otherwise you can always download the latest tool version from our website - www.obrcontrolsystems.com – from the Support section.

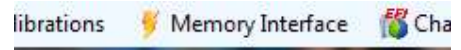


To check which tool version you have installed, please click on the “?” in the main menu, then select “About”:

11.5.2 Configuration

Once the right tool is installed on your PC, start the ECT program.

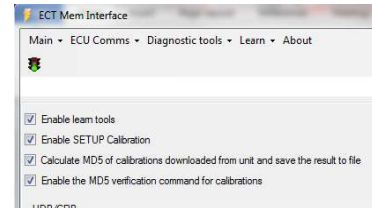
Click on the icon for “Memory Interface” in the main menu:



When the window opens click on the icon in the upper right-hand corner. In Settings tick the 2 boxes:



- ‘Calculate MD5 of calibrations downloaded from unit and save the result to file’.
- ‘Enable the MD5 verification command for calibrations’.



11.5.3 Creating MD5 files

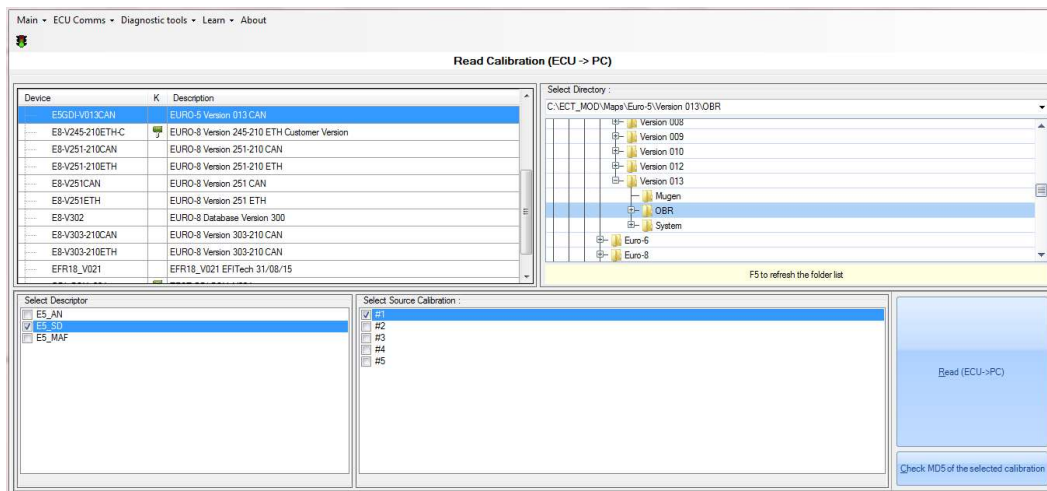
Creating the MD5 files used for map verification is very easy.

Simply copy the finalised maps from the ECU to your PC.

Select “ECU Comms” and then “Read Calibration” to copy an engine map to your PC.

Do not mix with the learn table.

Select “ECU Comms” and then “Read Setup Calibration” to copy an ECU setup map to your PC.



Here is shown the result of downloading two engine calibrations and one ECU setup calibration:

Name	Date modified	Type	Size
E5_setup_map_1.ECF	17/12/2015 11:09	ECF File	7 KB
E5_setup_map_1.ECF.MD5	17/12/2015 11:09	MD5 File	1 KB
Euro-5_map_pos_1.TAB	17/12/2015 11:08	TAB File	68 KB
Euro-5_map_pos_1.TAB.MD5	17/12/2015 11:08	MD5 File	1 KB
Euro-5_map_pos_2.TAB	17/12/2015 11:08	TAB File	68 KB
Euro-5_map_pos_2.TAB.MD5	17/12/2015 11:08	MD5 File	1 KB

The files with extension MD5 are the files used for use with the verification process.

11.5.4 Verifying engine calibrations

To verify maps in the ECU proceed this way:

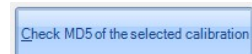
Connect your PC to the ECU and open the “Memory Interface” section in ECT.

Click ‘ECU Comms’ and then ‘Read Calibration’.

Select which engine map to verify:



Click the verification button to start the process:



Select the signature file linked to the selected engine map:

If the signature file is generated from the map found in the checked location you will see a confirmation:

If the map and the signature files do not correspond you will see an error message:

11.5.5 Verifying ECU setup calibrations

To verify the setup map in the ECU proceed this way:

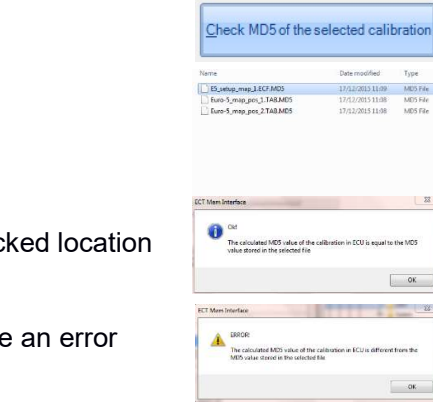
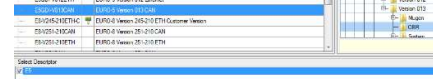
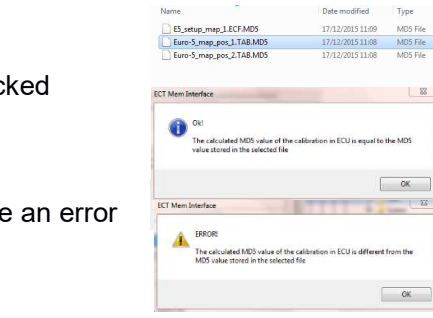
Connect your PC to the ECU and open the “Memory Interface” section in ECT.
Click “ECU Comms” and then “Read Setup Calibration”.

Click the verification button to start the process:

Select the signature file linked to the selected ECU setup map:

If the signature file is generated from the map found in the checked location you will see a confirmation:

If the map and the signature files do not correspond you will see an error message:



12 Charting Tool

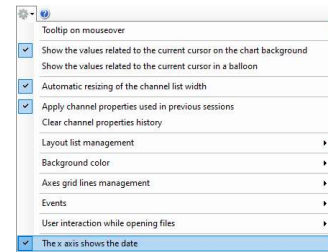


The Charting Tool is a graphic data analysis tool, displaying recorded data in a strip chart mode. It can display data from both the ECU's with on-board data recording as well as the ECT logger tool.

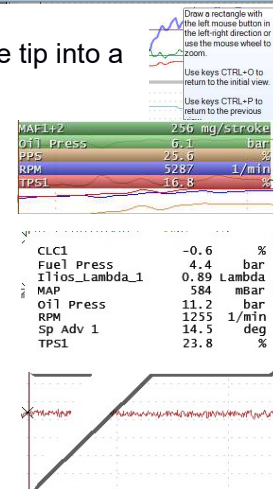
It can read the dedicated file formats used in ECT as well as the standard MDF file format. Data can be displayed in up to 5 separate windows plus an overview window at the bottom of the display.

12.1 Charting Tool Options

You can access the main settings for this tool by clicking on the settings icon in the right-hand upper corner of the display window and selecting your preferred options:



- Tool tip on mouseover**
 Select option if you want a help text to pop up when you move the mouse tip into a new section of a display.
- Show the values related to the current cursor on the chart background**
 Select to display channel data windows on the chart for the current cursor position.
- Show the values related to the current cursor in a balloon**
 Select option to display channel data in a balloon linked to the cursor position.
- Automatic resizing of the channel list width**
 Select this option to adjust channel width automatically when expanding details list, maximum when expanded, minimum when compact.
- Apply channel properties used in previous sessions**
 Select this recommended option to use previous defined channel properties.



- **Clear channel property history**
Select this option to discard earlier used channel properties.
- **Layout list management**
Recommended to select the option to link the channel list to all logged files.
- **Background color**
Choose between a dark or a light chart background.
- **Axes grid lines management**
You can show grid lines on the X-axis and on the Y-axis only if you have chosen to show the data channel's Y-axis. You can also set the color of the grid lines in this section.
- **Events**
Set the width of a display graph, its visual appearance and its color.
- **User interaction while opening files**
When opening data logging files created in ECT there is a possibility it can include duplicate channels. This can happen if data was recorded having more than one display open. It is recommended to select the setting to automatically delete duplicate channels.
- **The X-axis shows the date**
If selected the x-axis will show the time of 9:15:20 AM 9:15:30 AM 9:15:40 AM 9:15:50 AM 9:16:00 AM
the day instead of showing the default session run time.

12.2 File

File in the main menu gives access to:

12.2.1 Open main log file and load ALL channels into memory

When opening a log file, all data channels in the file are selected, click on **OK** to load the data in the charting tool.

12.2.2 Open main log file and choose which channels to load into memory

Selecting this option to load a file, you can select individual data channels to load. Click on a channel to load. To load additional channels, hold CTRL down and click all additional channels, then click **OK**.
Optionally, you may click '**Select all**' to load all data channels and then click on **OK**.

12.2.3 Open another log file for comparison and load ALL channels into memory

Select this option to load a second file as reference or comparison.

12.2.4 Open another log file for comparison and choose which channels to load

Select this option to load a second file as reference or comparison, optionally selecting individual files.

Click on a channel to load. To load additional channels, hold CTRL down and click all additional channels, then click **OK**.

Optionally, you may click '**Select all**' to load all data channels and then click on **OK**.
This file will be loaded into a different display segment than the first file. If data from the first file was loaded into display segment #1, then select segment 2 to 5.

12.2.5 Offset value to be added to each of the compared file channels

Select this option to align channel data between to logs. You can adjust this by keying in a positive or negative time interval in seconds, with a resolution of the time base at which the data is recorded. You can also use the interval by two cursors lined up at reference points for both data files.

12.2.6 Close file added for comparison

Click this option to unload the second data file loaded for comparison.

12.2.7 Print

Use this option to print the current screen layout, either using your printer or print to file. You can add text for both header and footer and select to print as portrait or landscape. Click PRINT to print the screen layout.

12.2.8 Export

The current charting tool display can be export in various formats:

- As a picture file
- As a csv file
- As an EBL data file
- As an MDF data file

12.2.9 Exit

Click to close the charting tool.

12.3 Edit

Edit in the main menu gives access to:

12.3.1 Channel Manager

This section is under revision.

12.3.2 Convert to constant sampling rate

Converts a dataset, where data channels are recorded at varying and not constant sampling rates, to data displayed with a constant sampling rate.

12.3.3 Convert to maximum sampling rate

Converts a dataset, where data channels are recorded at different sampling rates, to the highest sampling rate used by one or more channels. Data channels recorded at a lower sampling rates will have values added, calculated by interpolation.

12.4 Cursor

You can place a cursor anywhere in the display window.

Simply double click on the desired position to place the cursor.

You can adjust the width of the cursor by clicking on **Cursors** and **Cursor line width**.

Column V(t1) in the channel list now shows the data the value of individual channels at the cursor position is shown.

The measuring points are marked with an **x** where the lines are crossing.

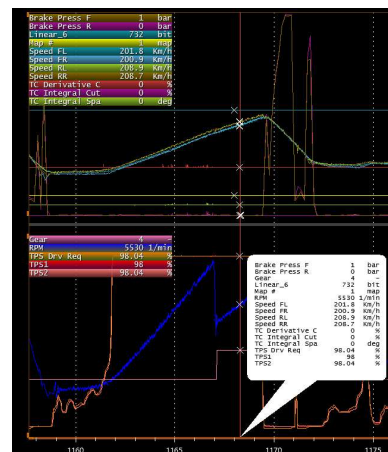
You can open a window displaying channel values for all channels shown in the display window.

Click on the settings icon in the main menu and select **Show the values related to the current cursor on the chart background**.

Data will be shown in the upper left hand corner of the data window.

Displaying channel data can also be linked directly to the cursor position, shown in a separate window.

Click on the settings icon in the main menu and select **Show the values related to the current cursor in a balloon**.



Using your mouse, you can grab the cursor and move it to any position. Place your mouse pointer over the cursor, it will change to show arrows, click and hold the left mouse button while dragging the cursor.

Using the left arrow key (<-) and the right-hand arrow key (->) you can move the cursor in steps of the actual rate data was recorded at, maximum 5 ms.

Using the scroll wheel on your mouse you can zoom in and zoom out centred around the cursor position. While dragging the cursor you can monitor the channel values change in window V(t1).

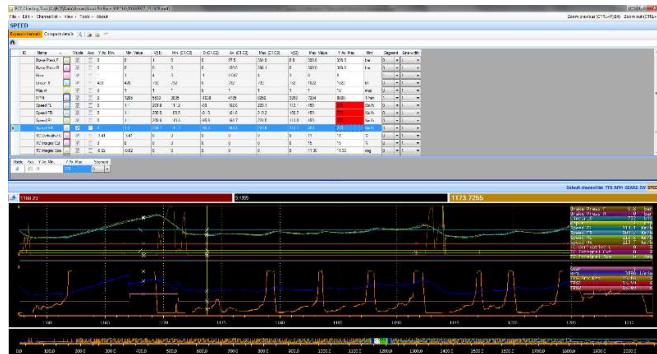
The overview window at the bottom of your monitor will show the full log while the sections above shows any level, zoomed in or zoomed out. The part of the logged data analysed is shown as a green area in the overview window.

- **CTRL+O** is a hot key to zoom out to show the complete run.
- **CTRL+P** is a hot key for zoom out in steps to finally show the complete run.
- **CTRL+R** bring up a 2nd cursor, placing it close to the primary cursor.

12.4.1 Two Cursors

It is possible to load a 2nd cursor by clicking **CTRL+R**. With this feature you can measure time between 2 events and display average values of the data channels between the two cursors.

With 2 cursors in a display you can measure time between events, and you can quickly evaluate data channel values between the two cursors.



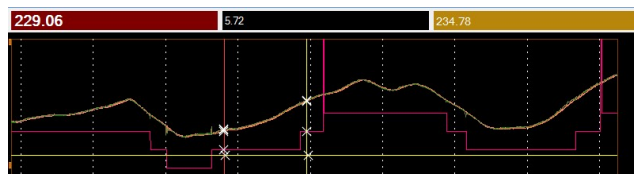
Click on 'Expand details' to show:

Channel name	Visible	Axis	Y Ax. Min.	Min. Value	V(t1)	Min. (C1,C2)	D (C1,C2)	Av. (C1,C2)	Max. (C1,C2)	V(t2)	Max. Value	Y Ax. Max.	Unit	Segment	Line width
Oil_Temp	<input checked="" type="checkbox"/>		90.25	90.25	105	0	0	0	0	105.25	16327.75	16327.75	°C	0	1
Pil in Active	<input checked="" type="checkbox"/>		0	0	0	0	0	0	0	0	265	265	flan	0	1

Additional columns are now displayed in the channel list:

- **D (C1,C2)** shows the difference between channel values at cursor 1 and cursor 2 positions.
- **Av (C1,C2)** shows the average channel value between cursor 1 and cursor 2 positions.
- **Max (C1,C2)** shows the maximum data value found between cursor 1 and cursor 2 positions.
- **V(t2)** shows the channel data at cursor 2 position.

The time measured since start recording data and to the position of cursor 1 is shown in the left window above the graphic display.

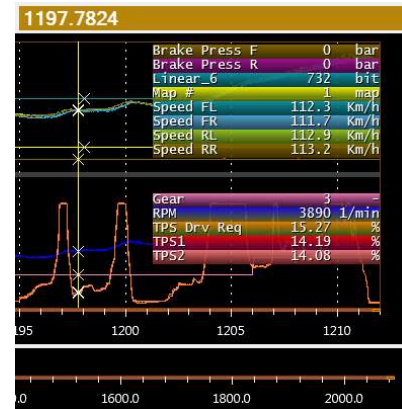


The time measured since start recording data and to the position of cursor 2 is shown in the right window above the graphic display.

The time difference between the positions of cursor 1 and cursor 2 are shown in the middle window above the graphic display. By clicking on either of these windows you can change which cursor is the active one.

If you have activated the display of channel data values the data for cursor 1 position will be shown on the left side of the display when you move the cursor.

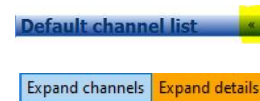
The data for cursor 2 position will be shown on the right side of the display when you move the cursor.



12.5 Channel List

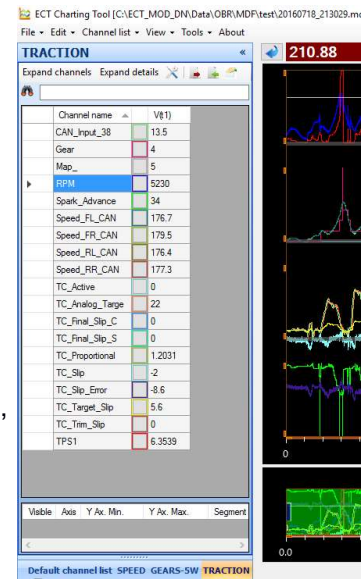
The channel list in the main display gives access to:

- **Hide all data channels**, click on ‘ \ll ’ to hide all logged channels.
- **Show all data channels**, click on ‘ \gg ’ to show all logged channels.
- **Expand channels**, click on the text to show all data channels recorded.
- **Compact channels**, click on the text to show only data channels visible in current display.
- **Expand details**, click on the text to show data details for all channels recorded.
- **Compact details**, click on the text to show only name, color and value at cursor position.
- Manual or automatic channel scaling.



To the left of the strip chart graphic data window you have the channel list. This list displays either all channels loaded with the data file if you click “Expand channels” or, if you click “Compact channels” only the channels open in the data window.

- Click **Channel Name** to sort channels alphabetically.
- Tick or untick the box marked **Visible** to add or remove channels. Click on a channel, press CTRL+V to add or remove a channel.
- Tick or untick the box marked **Axis** to add or remove the channel scaling on the Y-axis. If selected, you can also add grid lines.
- **Y Ax. Min.** shows the display’s minimum value of the channel.
- **Min Value** shows the data channels global minimum value.
- **V(t)** shows the channel data at the cursor position.
- **Max Value** shows the data channels global maximum value.
- **Y Ax. Max.** shows the display’s maximum value of the channel.
- **Unit** shows the unit of the data channel, for example bar, degrees, RPM.
- Using **Segments** you can assign the data channel to 1 of 5 available display segments. See section 13.8.
- In **Line width** you select the thickness of the data graph, recommended value is “1”.
- **Format** allows you to define number of channel data decimal points.



You can also change channel scaling by marking one channel or multiple channels and then right-click the marked channels. Selecting ‘**Automatic recalculation of minimum and maximum values**’ re-scales the channels to display data between the minimum and maximum recorded data for each channel.

Hoover the mouse over any channel in the list to highlight the channel in the graphic window. You can also hoover the mouse over the graph in the display to highlight it in the channel list.

- If you double click on the minimum channel value in the channel list a cursor will be placed in that position within the full run. Using the zoom function, you can view the data in detail.
- If you double click on the maximum channel value in the channel list a cursor will be placed in that position within the full run. Using the zoom function, you can view the data in detail.

Channel name	Visible	Axis	Y Ax. Min.	Min. Value	V(1)	Max. Value	Y Ax. Max.	Unit	Segment	Line width
Car Speed	<input checked="" type="checkbox"/>	<input checked="" type="checkbox"/>	0	37.8	146	6553.5	270	Km/h	1	1

Click on the icon to define which channels shall be visible in the channel list.

Typical full channel list for a user configured display having 2 cursors.

Channel name	Visible	Axis	Min.	V(1)	Max.	V(2)	Unit	Segment	Line width	
Car_Speed	<input checked="" type="checkbox"/>	0	37.8	146	6553.5	270	Km/h	1	1	
Map_	<input checked="" type="checkbox"/>	1	1	1	1	1	map	0	1	
RPM	<input checked="" type="checkbox"/>	2	3837.9999964234	3815	2	3837.625	3888	3837.38084637056	7241	1
Speed_FL_CAN	<input checked="" type="checkbox"/>	0	78.4	78.4	0	78.4	78.4	79.1672605760544	270	1
Speed_FR_CAN	<input checked="" type="checkbox"/>	0	75.4	75.4	0	75.4	75.4	75.6	270	1
Speed_RL_CAN	<input checked="" type="checkbox"/>	0	78.9	78.9	0	78.9	78.9	79.5672605760544	270	1
Speed_RR_CAN	<input checked="" type="checkbox"/>	0	79.2	79.2	0	79.2	79.2	79.5004454320408	270	1
TPS1	<input checked="" type="checkbox"/>	0	20.0391006801035	19.3548387096774	0.02621915054628	19.3548387096774	19.3548387096774	19.3548387096774	110	1
TPS2	<input checked="" type="checkbox"/>	0	20.7233626564688	19.6152196587573	1.173005278554	20.2191661778081	20.7233626564688	19.6152196587573	110	1

Click on **Compact Details** to reduce the channel list to display the data channel values at cursor positions only.

Channel name	V(1)	V(2)
Car_Speed	78.4	79.1672605760544
Gear	2	2
Map_	1	1
RPM	3837.9999964234	3837.38084637056
Speed_FL_CAN	78.4	79.1672605760544
Speed_FR_CAN	75.4	75.6
Speed_RL_CAN	78.9	79.5672605760544
Speed_RR_CAN	79.2	79.5004454320408
TPS1	20.0391006801035	19.3548387096774
TPS2	20.7233626564688	19.6152196587573

To change the scaling of a data channel, click on the channel in the channel list.

Key in the minimum value to display on the Y-axis in 'Y Ax. Min'
Key in the maximum value to display on the Y-axis in 'Y Ax. Max'

Visible	Axis	Y Ax. Min.	Y Ax. Max.	Segment
<input checked="" type="checkbox"/>	0	0	8000	1

A full channel list could look like this:

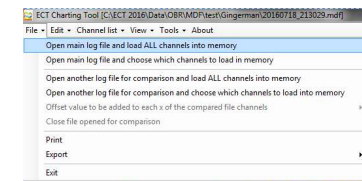
Channel name	Visible	Axis	Y Ax. Min.	Y Ax. Max.	Segment	Line width
Car_Speed	<input checked="" type="checkbox"/>	0	37.8	6553.5	1	1
Map_	<input checked="" type="checkbox"/>	1	1	1	0	1
RPM	<input checked="" type="checkbox"/>	2	3837.9999964234	3888	1	1
Speed_FL_CAN	<input checked="" type="checkbox"/>	0	78.4	78.4	1	1
Speed_FR_CAN	<input checked="" type="checkbox"/>	0	75.4	75.4	1	1
Speed_RL_CAN	<input checked="" type="checkbox"/>	0	78.9	78.9	1	1
Speed_RR_CAN	<input checked="" type="checkbox"/>	0	79.2	79.2	1	1
TPS1	<input checked="" type="checkbox"/>	0	20.0391006801035	19.3548387096774	1	1
TPS2	<input checked="" type="checkbox"/>	0	20.7233626564688	19.6152196587573	1	1

Click on **Compact Channels** to show only channels active in the open graphic window.

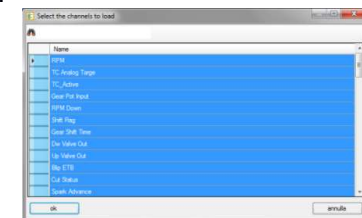
Channel name	Visible	Axis	Y Ax. Min.	Y Ax. Max.	Segment	Line width
Car_Speed	<input checked="" type="checkbox"/>	0	37.8	6553.5	1	1

12.6 Load a File

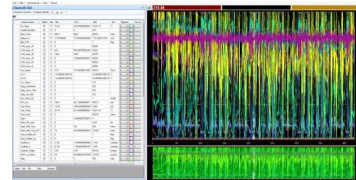
When you open Charting Tool it opens its file manager. Locate the folder where you store your downloads. If you have used the ECT logger tool for displays, the default location is the display folder for the ECU in use, found in the main ECTUSER location. Select the file format you have selected for your ECT logging feature. Select the **MDF** file format if you load a file from an ECU logger. Click **'Open'** to select the data file to analyse.



The tool opens a channel window giving you the option to load all recorded data channels or to select individual channels - by default all channels are selected. Click **OK** to open selected files.



The channel manager and a main graphic display now opens. First time the Charting Tool opens it will display all files as default. If you change any channel data, for example scaling or colors, these settings are saved when you exit Charting Tool. All files are displayed in a main single segment large strip chart and an overview window at the bottom of the screen.



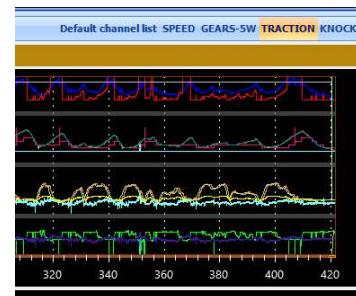
On the left is shown the default channel list with access to recorded data. In this window you can change the color of each channel, it shows the minimum and maximum channel values and gives access to change the minimum and maximum displayed channels.

12.7 Create, Save and Load a Personalised Display Layout

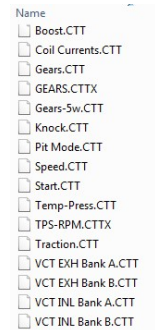
You can create personalised data layouts, making it easy to switch between for example analysis of combustion, gear shift and traction control.

Opening the tool select the channels you want to open for a specific layout.

If you loaded all channels when you opened the tool, you can generate a personalised layout by de-selecting channels.



- Select channels to be included in the new group by un-ticking the box **Visible** to remove data channels you do not want to display in your personalised group.
- Select your preferred color for the data channel.
- Tick the box **Axis** to add the channel scale on the left Y-axis in the display segment.
- Select in which segment of 5 to display the data channel.
- Select the line width; recommended setting is 1.



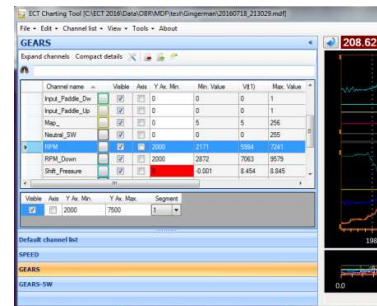
When the display is created, click the icon to save the layout.

Click the icon to load a layout. Select your layout from the list of your saved layouts. Once a new layout has been created, any changes made to it will be saved automatically when you close the layout.

You can load several layouts in a display screen. Depending of the display orientation, you will see a tab either to the left or at the bottom of the display screen, listing the layouts loaded. Switch between layouts with a single mouse click.

The tool will automatically set minimum and maximum channel values, but you can change these to suit your preferences.

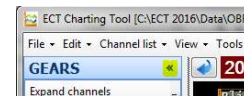
In the channel window click the column to the left of the data channel you want to manually set minimum and maximum display values for.



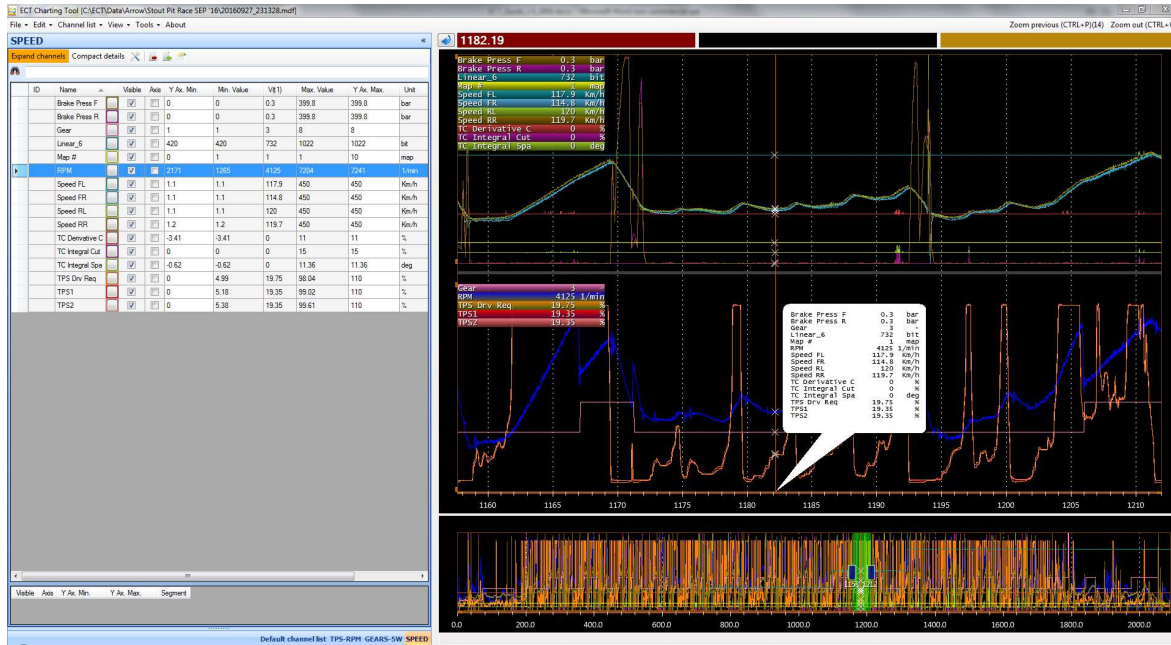
The channel selected turns blue and settings for the Y-axis can now be modified in the window below the channel data.

You can maximise the graphic display window by closing the channel list.

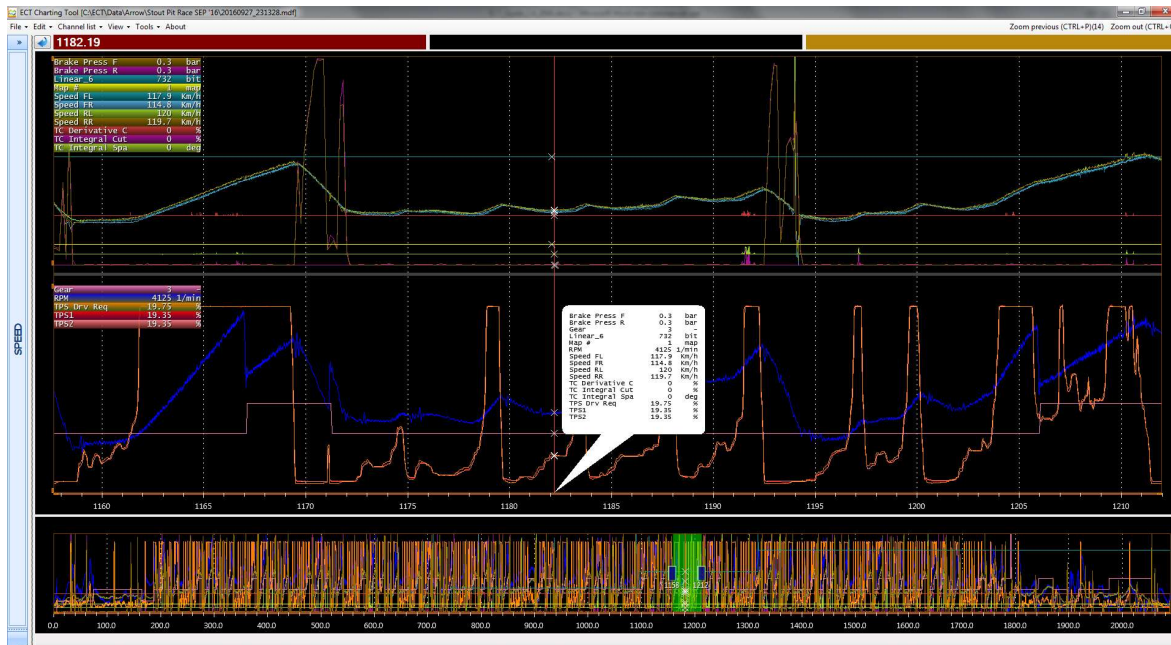
Click on the double arrow, << marked in yellow, to expand the graphic window.



Change from this layout:



To this layout:

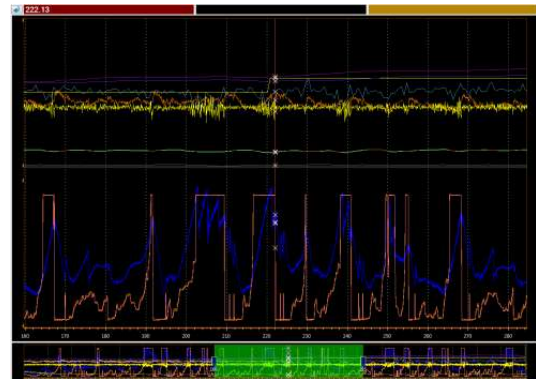
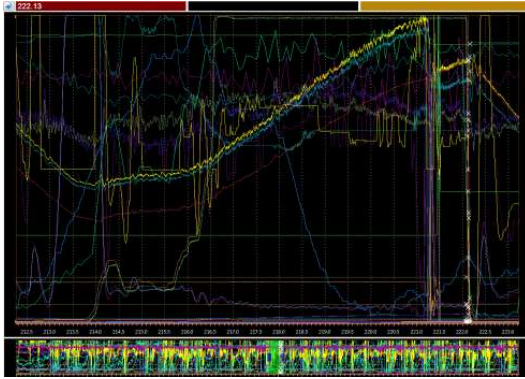


Click on the double arrow >> to return to the channel list.

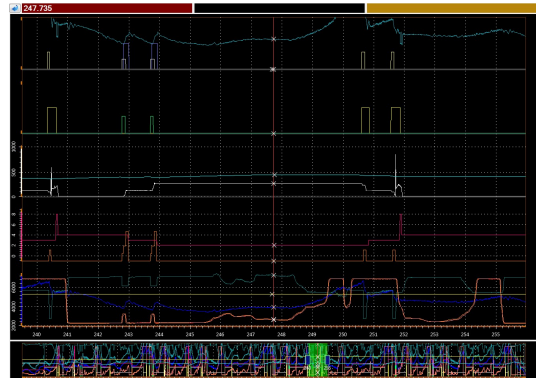
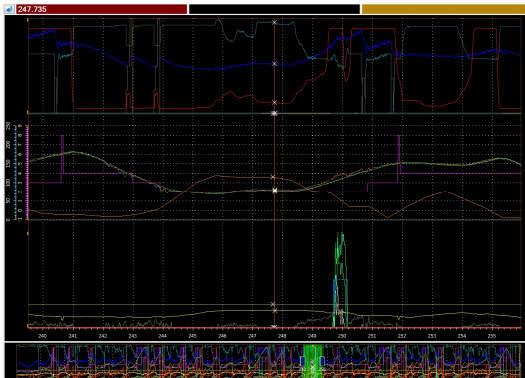
12.8 Display Segments

Data can be visualized in individual segments. You can select up to 5 individual segments. Additionally, an overview window is shown at the bottom of the window. To move a channel to another segment, click on it in the channel list, press **CTRL+1** (you can select 1-to-5). You can also select the segment directly from the expanded channel list detail, select the segment number from the drop-down menu.

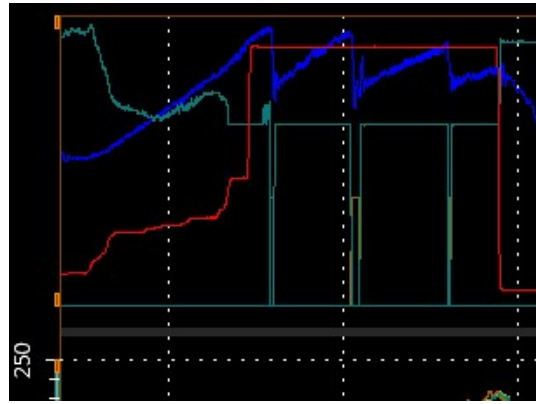
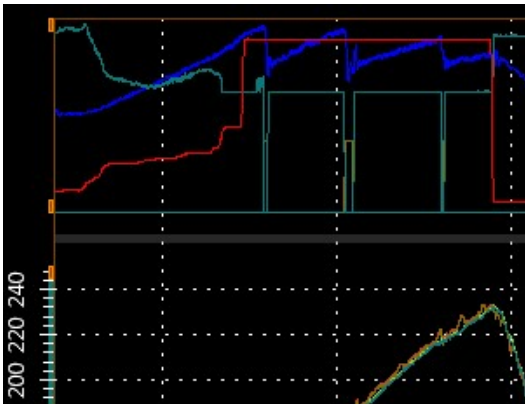
Here are examples of 1 and 2 segments layout:



Here are layouts having 3 and 5 segments:



The height of each display segment can be adjusted to suit personal preferences. Place the cursor on the segment's bottom line, it will turn to fat gray. Click your left mouse button and move the line up or down.



12.9 Zoom In / Zoom Out

There are two ways you can zoom in on data for a closer analysis of events.

You can draw a rectangle by click and hold the left mouse button and move the mouse from left to right. Let go of the mouse button when the desired area is marked and the display zooms into the desired area.

Click **CTRL+P** to return to the previous level in steps or press **CTRL+O** to the initial view.


Another way is by using the cursor position and the scroll wheel on your mouse.

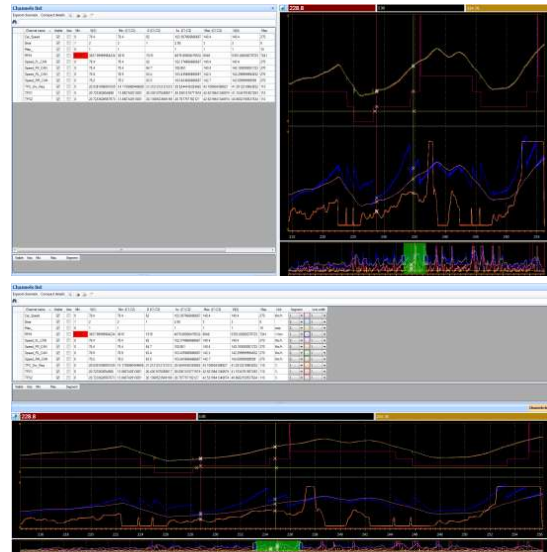
Double click on the display to place your cursor in a desired position.

Now use the scroll wheel on your mouse to zoom in, centred on the cursor.

12.10 Display Orientation

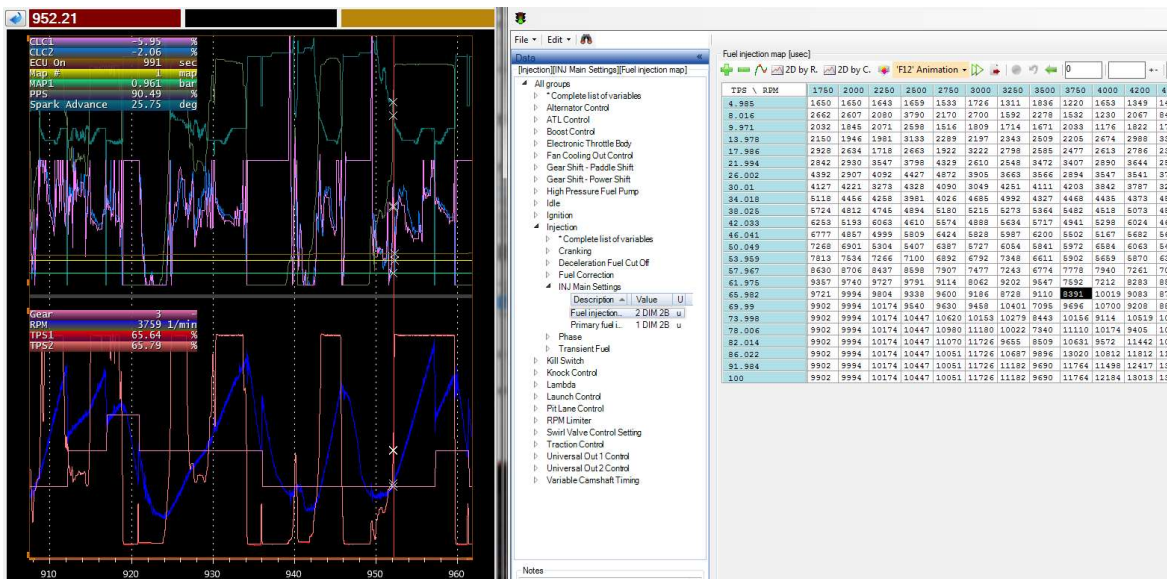
You can change your display layout orientation:

Click on the icon  in the upper left-hand corner of the graphic display to change the layout to:



Click on the icon  to return to the first orientation.

12.11 Link analysis display with engine calibration



You can link the logged data with the actual speed and load position within the engine calibration. The logged data must contain a data channel with the same name as the X-axis in the engine calibration, for example RPM.

This way you can follow the settings within, for example, the fuel map, the boost map or the spark advance map.

To link the data simply open the logged data file, then open the calibration tool.

Open the engine calibration from which the data log file was generated.

Select the map to analyse, shown here as the fuel map, and note the black cursor follows the location of the data cursor in the data display.

13 ECU Logger

Except for Euro-2 all our ECUs have a built-in data recording module. If you have installed the data logger tool, you can access it from within ECT.

13.1 Initial Setup

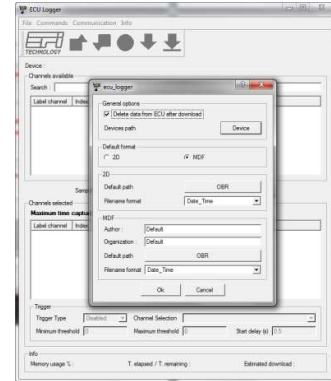
First time you start the logger tool, click on **File** and then **Options**.

Tick the box to clear the logger after downloading data.

Define the path to ECU databases, it is recommended to select the main **Device** folder.

Select to download logged data in a standard MDF format so you can use the charting tool to analyse MDF data files.
 Select your preferred path for the MDF data downloads.
 Click **OK** to confirm settings.

Now click on File again and click on **Select Device** to choose which ECU database you want to load.



13.2 Communication

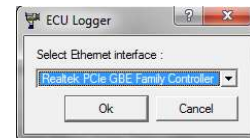
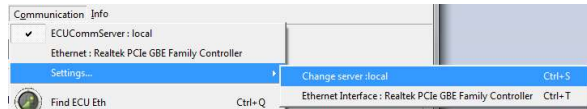
The logger tool can communicate with the ECUs either via CAN (standard configuration) or optionally via Ethernet (if the ECU supports this protocol).

- Select **ECUCommServer : local** to use CAN communication.
- Select **Ethernet** to use Ethernet communication.



Next confirm server connection.

- Select Local when using CAN communication.
- Select the Ethernet interface if you use Ethernet and then confirm the controller in use in your PC.



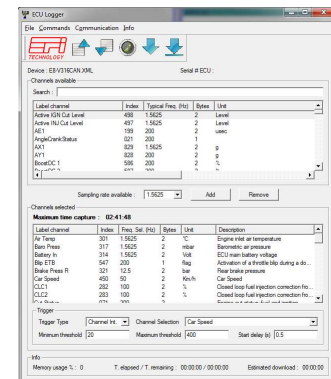
13.3 Configuring

When you have loaded an ECU database you will see the channels available for the recorder module in the upper window, '**Channels available**'.

Double click on channels in this list which you want to record. They will appear in the window below, '**Channels selected**'.

Data channels can be recorded at sampling rates between 1 Hz and 200 Hz.

To change a selected sampling rate for a channel, click on the channel in the '**Channels selected**' window and use the right or left arrow key to select the preferred rate.



Activation of the logger can be controlled by several options:

- **Continuous**, ECU logging data when the ECU is switched on.
- **External switch**, the logger is activated by an external switch.
- **Internal switch**, the logger is controlled by one of the logged channels.

Typical data channels used for activating the logger are car speed and engine RPM.

Select the threshold for activating the logger.

If you have chosen to use the engine RPM as a trigger it is recommended to have the activation threshold above the engine idle speed.

You can set a high threshold for stopping the data recording. If you want to record data with no upper limit, then it is recommended to set engine RPM or car speed well above what will be achieved.

In **Start Delay** you can key in a delay for activating or deactivating the recording when the lower threshold is reached. Suggested time is 5 to 10 seconds.

Click on **File** and then **Save Configuration** to save the logger configuration file to disk.

13.4 Update Logger – Download Data



Upload logger configuration, this takes a few seconds. This process clears the logger memory.



Download logger configuration



Download logged data, click icon when you have connected to the ECU



Download logged data as soon as tool finds ECU connected

When the download has finished you will be prompted to add comments about the recording.

Click **OK** when done editing.

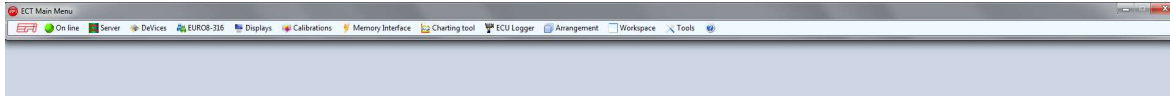
If you have chosen NOT to clear the logger memory when configuring the system, you will now be asked if you want the data cleared.

If you have chosen to delete data automatically, the ECU will clear the memory. In this process the ECU clears the memory and will start recording new data when done if the start conditions are met.

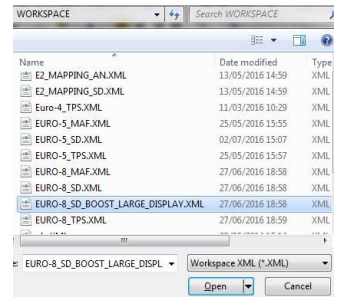
14 Workspace

Once you have created your preferred layout of the tool, combining for example displays and the calibration editor, you can save your current layout as a workspace. This way you can load your preferred layout with a few clicks with your mouse.

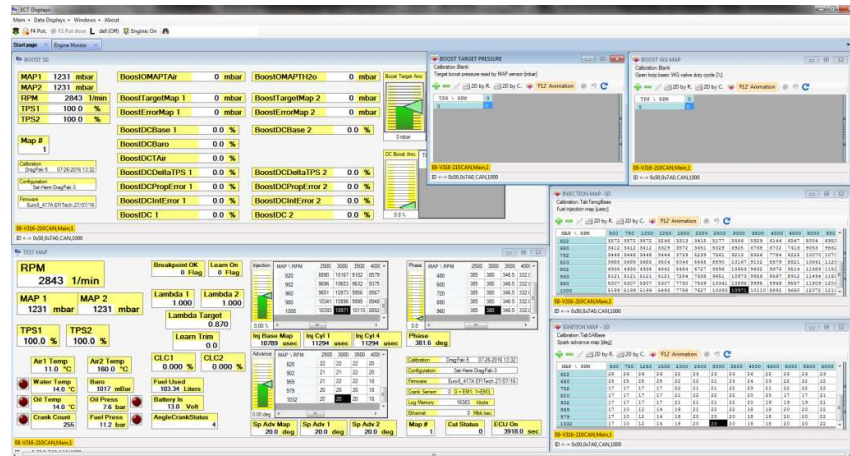
As an example, you start with this layout:



Now click on **Workspace** in the main menu, click on **Load Workspace** and select one of your layouts.



Now click on Open and your display could for example look like this:



or

